

Compal Confidential

Model Name : Q1VZC  
File Name :LA-8941P  
BOM P/N:43

# Compal Confidential

## Q1VZC M/B Schematics Document

Intel Sandy Bridge ULV Processor + Panther Point PCH

2012-04-19

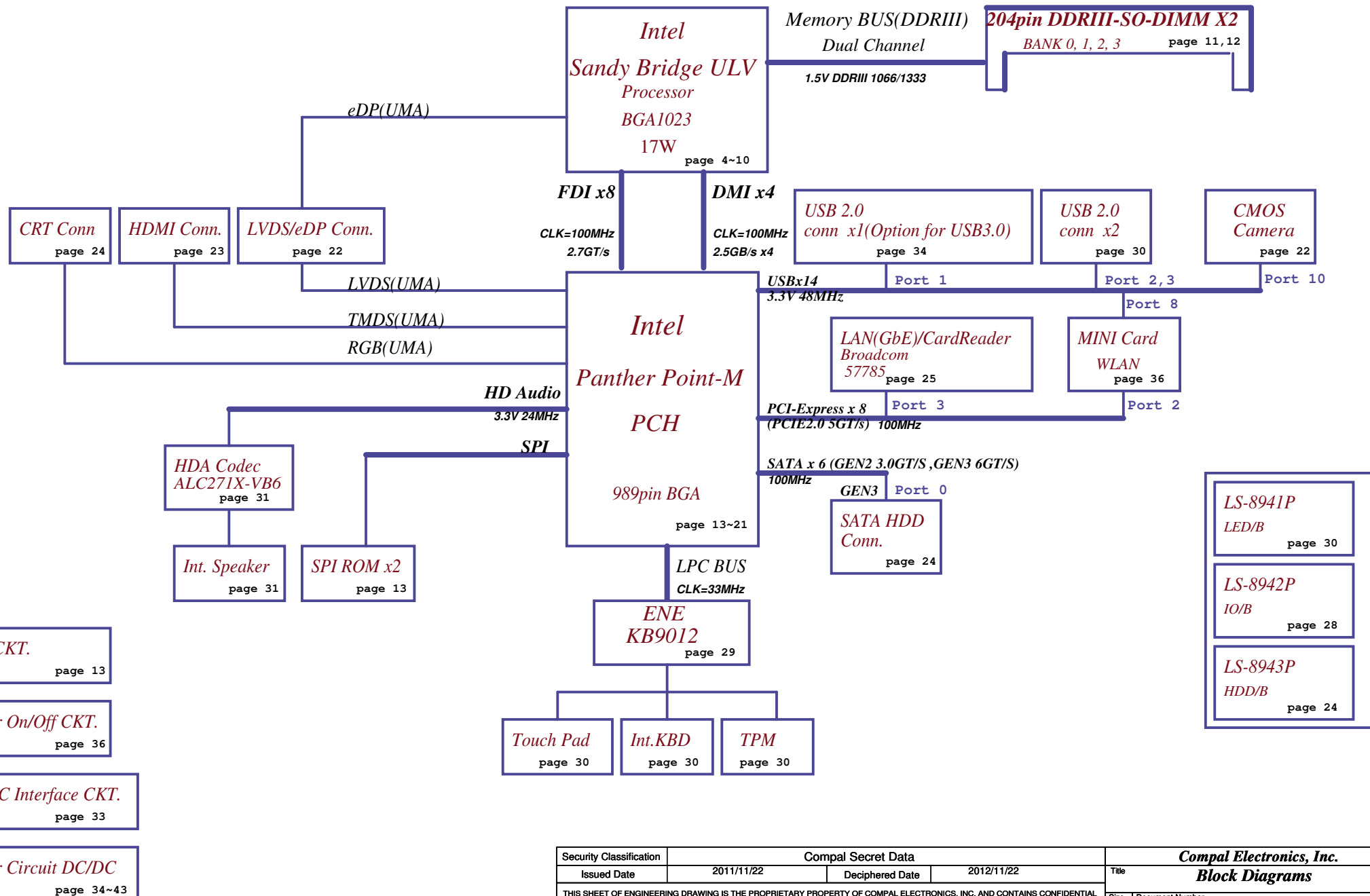
REV:1.0

Security Classification	Compal Secret Data			Compal Electronics, Inc.		
Issued Date	2011/11/22	Deciphered Date	2012/11/22	Title	Cover Page	
THIS SHEET OF ENGINEERING DRAWING IS THE PROPRIETARY PROPERTY OF COMPAL ELECTRONICS, INC. AND CONTAINS CONFIDENTIAL AND TRADE SECRET INFORMATION. THIS SHEET MAY NOT BE TRANSFERRED FROM THE CUSTODY OF THE COMPETENT DIVISION OF COMPAL ELECTRONICS, INC. WITHOUT PRIOR WRITTEN CONSENT OF COMPAL ELECTRONICS, INC. NEITHER THIS SHEET NOR THE INFORMATION IT CONTAINS MAY BE USED BY OR DISCLOSED TO ANY THIRD PARTY WITHOUT PRIOR WRITTEN CONSENT OF COMPAL ELECTRONICS, INC.				Document Number	Q1VZC M/B LA-8941P Schematic	Rev 1.0
				Date:	Friday, April 20, 2012	Sheet 1 of 45

# Compal Confidential

Model Name : Q1VZC

File Name :LA-8941P



Security Classification		Compal Secret Data		Compal Electronics, Inc.	
Issued Date	2011/11/22	Deciphered Date	2012/11/22	Title	
THIS SHEET OF ENGINEERING DRAWING IS THE PROPRIETARY PROPERTY OF COMPAL ELECTRONICS, INC. AND CONTAINS CONFIDENTIAL AND TRADE SECRET INFORMATION. THIS SHEET MAY NOT BE TRANSFERRED FROM THE CUSTODY OF THE COMPETENT DIVISION OF R&D DEPARTMENT EXCEPT AS AUTHORIZED BY COMPAL ELECTRONICS, INC. NEITHER THIS SHEET NOR THE INFORMATION IT CONTAINS MAY BE USED BY OR DISCLOSED TO ANY THIRD PARTY WITHOUT PRIOR WRITTEN CONSENT OF COMPAL ELECTRONICS, INC.				Size	Document Number
				Custom	Q1VZC M/B LA-8941P Schematic
				Date:	Friday, April 20, 2012
				Sheet	2 of 45
				Rev	1.0

Voltage Rails

Power Plane	Description	S1	S3	S5
VIN	Adapter power supply (19V)	N/A	N/A	N/A
BATT+	Battery power supply (12.6V)	N/A	N/A	N/A
B+	AC or battery power rail for power circuit.	N/A	N/A	N/A
+CPU_CORE	Core voltage for CPU	ON	OFF	OFF
+VGFX_CORE	Core voltage for UMA graphic	ON	OFF	OFF
+0.75VS	+0.75VP to +0.75VS switched power rail for DDR terminator	ON	OFF	OFF
+1.05VS_VTT	+1.05VS_VTTP to +1.05VS_VTT switched power rail for CPU	ON	OFF	OFF
+1.5V	+1.5VP to +1.5V power rail for DDRIII	ON	ON	OFF
+1.5VS	+1.5V to +1.5VS switched power rail	ON	OFF	OFF
+1.8VS	(+5VALW or +3VALW) to 1.8V switched power rail to PCH & GPU	ON	OFF	OFF
+3VALW	+3VALW always on power rail	ON	ON	ON*
+VCCSUS3_3	+3VALW to +VCCSUS3_3 power rail for PCH (Short Jump)	ON	ON	ON*
+3VS	+3VALW to +3VS power rail	ON	OFF	OFF
+5VALW	+5VALWP to +5VALW power rail	ON	ON	ON*
+5VREF_SUS	+5VALW to +5VREF_SUS power rail for PCH (Short resister)	ON	ON	ON*
+5VS	+5VALW to +5VS switched power rail	ON	OFF	OFF
+VSB	+VSBP to +VSB always on power rail for sequence control	ON	ON	ON*
+RTCVCC	RTC power	ON	ON	ON
Note : ON* means that this power plane is ON only with AC power available, otherwise it is OFF.				

EC SM Bus1 address

Device	Address
Smart Battery	0001 011X b

PCH SM Bus address

Device	Address
ChannelA DIMM0 A0	1010 000X JDIMM1(STD)
ChannelB DIMM0 B0	1010 010X JDIMM2(REV)

STATE \ SIGNAL	SLP_S1#	SLP_S3#	SLP_S4#	SLP_S5#	+VALW	+V	+VS	Clock
Full ON	HIGH	HIGH	HIGH	HIGH	ON	ON	ON	ON
S1 (Power On Suspend)	LOW	HIGH	HIGH	HIGH	ON	ON	ON	LOW
S3 (Suspend to RAM)	LOW	LOW	HIGH	HIGH	ON	ON	OFF	OFF
S4 (Suspend to Disk)	LOW	LOW	LOW	HIGH	ON	OFF	OFF	OFF
S5 (Soft OFF)	LOW	LOW	LOW	LOW	ON	OFF	OFF	OFF

Board ID / SKU ID Table for AD channel

Vcc	3.3V +/- 5%				
Ra/Rc/Re	100K +/- 5%				
Board ID	Rb / Rd / Rf	VAD_BID min	VAD_BID typ	VAD_BID max	
0	0	0 V	0 V	0 V	
1	8.2K +/- 5%	0.216 V	0.250 V	0.289 V	
2	18K +/- 5%	0.436 V	0.503 V	0.538 V	
3	33K +/- 5%	0.712 V	0.819 V	0.875 V	
4	56K +/- 5%	1.036 V	1.185 V	1.264 V	
5	100K +/- 5%	1.453 V	1.650 V	1.759 V	
6	200K +/- 5%	1.935 V	2.200 V	2.341 V	
7	NC	2.500 V	3.300 V	3.300 V	

BOARD ID Table

Board ID	PCB Revision
0	0.1
1	0.2
2	0.3
3	1.0
4	
5	
6	
7	

USB Port Table

USB 2.0	USB 1.1	Port	3 External USB Port
EHCI1	UHCI0	0	
		1	USB 2.0(Options for USB3.0)
	UHCI1	2	USB port(Left 2.0)
		3	USB Port(Left 2.0)
	UHCI2	4	
		5	
EHCI2	UHCI3	6	
		7	
	UHCI4	8	Mini Card(WLAN)
		9	
	UHCI5	10	Camera
		11	
	UHCI6	12	
		13	

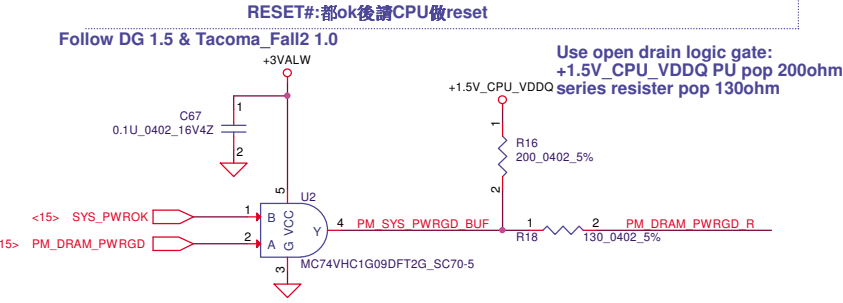
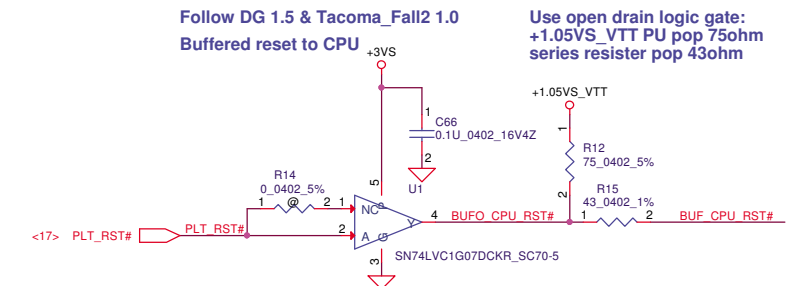
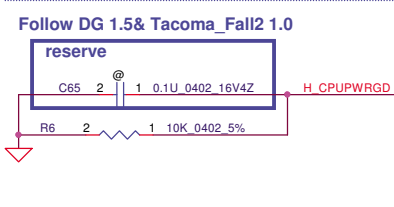
BTO Option Table

BTO Item	BOM Structure
Celeron 867	C867@
Pentium 977	P977@
Unpop	@
eDP Panel	EDP@
LVDS Panel	LVDS@
Connector	CONN@
USB3 Only	USB3@
Deep S3	DS3@
Normal S3	S3@
Intel i5/i7 CPU only	I57@
Celeron/Pentium/i3 CPU only	CP3@

USB 3.0	Port	
XHCI	1	
	2	USB Port(Right 3.0)
	3	
	4	



PCH->CPU  
UNCOREPWRGOOD:非CORE外的電OK  
SM\_DRAMPWROK:DRAM power ok  
RESET#:都ok後請CPU做reset



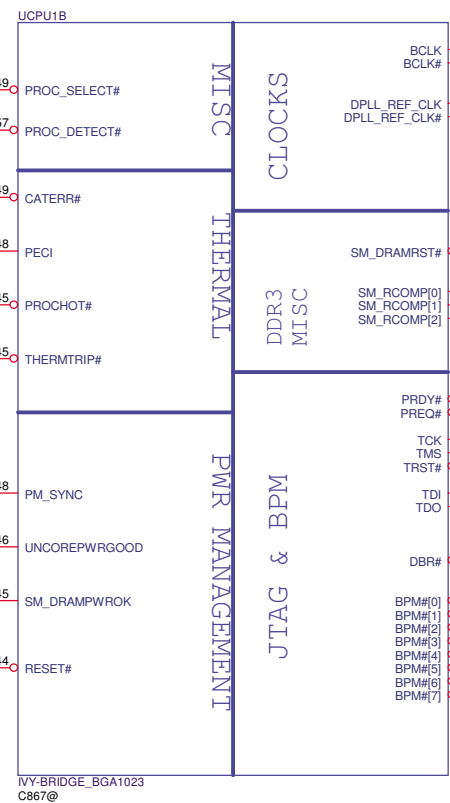
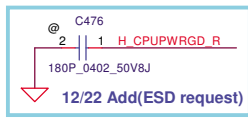
PROC\_SELECT#  
PH VCPLL and connect to PCH DF\_TV5

偵測CPU有無安裝  
XBOX 三缸功能

follow Checklist 1.5

UNCOREPWRGOOD:非CORE外的電OK  
PM\_DRAM\_PWRGD\_R

SM\_DRAMPWROK:DRAM power ok  
BUF\_CPU\_RST#



0921 LVDS@->->@

CLK\_CPU\_DPLL# R4 2 LVDS@ 1 1K 0402 5%

CLK\_CPU\_DPLL R5 2 LVDS@ 1 1K 0402 5%

Checklist 1.5 P.67 Graphis Disable Guide  
eDP disable:  
DPLL\_REF\_SSCLK PD 1K 5% to GND  
DPLL\_REF\_SSCLK# PU 1K 5% to +1.05VS\_VTT

SM\_RCOMP0,SM\_RCOMP1  
W=20mil L=500mil S=13mil

SM\_RCOMP2  
W=15mil L=500mil S=13mil

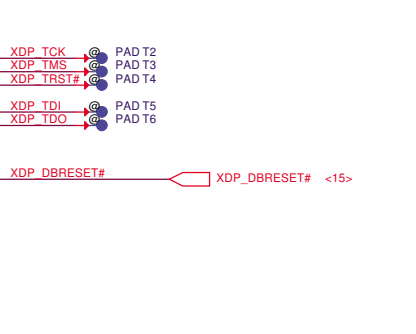
SM\_DRAMRST#

SM\_RCOMP0 R9 2 140\_0402\_1%

SM\_RCOMP1 R10 2 25.5\_0402\_1%

SM\_RCOMP2 R11 2 200\_0402\_1%

DDR3 Compensation Signals



Tacoma\_Fall2 1.0 PU 1K +3VS  
Check list 1.5 PU 1K +3VS  
Debug port DG1.1-1.3 50-5K ohm

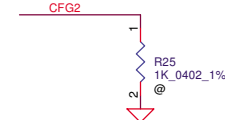
Security Classification		Compal Secret Data		Compal Electronics, Inc.		
Issued Date		Deciphered Date		PROCESSOR(3/7) DDR3		
2011/11/22		2012/11/22		Q1VZC M/B LA-8941P Schematic		
THIS SHEET OF ENGINEERING DRAWING IS THE PROPRIETARY PROPERTY OF COMPAL ELECTRONICS, INC. AND CONTAINS CONFIDENTIAL AND TRADE SECRET INFORMATION. THIS SHEET MAY NOT BE TRANSFERRED FROM THE CUSTODY OF THE COMPETENT DIVISION OF R&D DEPARTMENT EXCEPT AS AUTHORIZED BY COMPAL ELECTRONICS, INC. NEITHER THIS SHEET NOR THE INFORMATION IT CONTAINS MAY BE USED BY OR DISCLOSED TO ANY THIRD PARTY WITHOUT PRIOR WRITTEN CONSENT OF COMPAL ELECTRONICS, INC.				Size Custom	Document Number	Rev 1.0
				Date:	Friday, April 20, 2012	Sheet 5 of 45



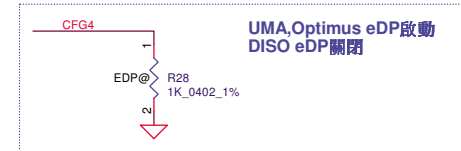


These pins are for solder joint reliability and non-critical to function. For BGA only.

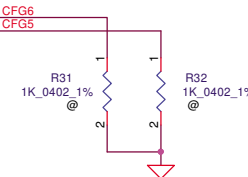
## CFG Straps for Processor



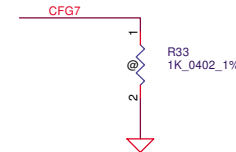
PEG Static Lane Reversal - CFG2 is for the 16x	
CFG2	1: Normal Operation; Lane # definition matches socket pin map definition * 0: Lane Reversed



eDP enable	
CFG4	* 1: Disable 0: Enable



PCIe Port Bifurcation Straps	
CFG[6:5]	11: (Default) 1x16 PCI Express * 10: 2x8 PCI Express 01: Reserved 00: 1x8, 2x4 PCI Express



PEG DEFER TRAINING	
CFG7	1: (Default) PEG Train immediately following xxRESETB de assertion 0: PEG Wait for BIOS for training

INTEL Recommend VCC  
4\*470UF,12\*22uF(0805) and 35\*2.2uF(0402)  
PD0.8  
CAP at P.51

ULV type  
DC 33A

UCPU1F

POWER

8.5A

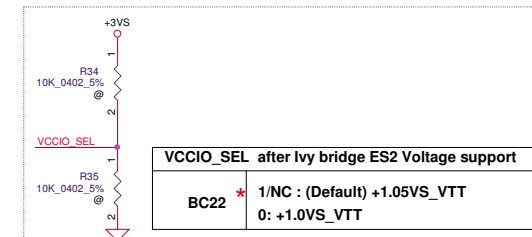
+CPU\_CORE

+1.05VS\_VTT

For DDR

INTEL Recommend VCCIO  
2\*330UF,10\*10uF(0603) and 26\*1uF(0402)  
PD0.8  
CAP at P.51

For PEG



Place the PU  
resistors close to CPU

Place the PU  
resistors close to VR

Should change to connect form  
power circuit & layout differential  
with VCCIO\_SENSE.

Check list 1.5

IVY-BRIDGE\_BGA1023  
C867@

Security Classification		Compal Secret Data		Compal Electronics, Inc.	
Issued Date		2011/11/22	Deciphered Date	2012/11/22	PROCESSOR(5/7) PWR,BYPASS
THIS SHEET OF ENGINEERING DRAWING IS THE PROPRIETARY PROPERTY OF COMPAL ELECTRONICS, INC. AND CONTAINS CONFIDENTIAL AND TRADE SECRET INFORMATION. THIS SHEET MAY NOT BE TRANSFERRED FROM THE CUSTODY OF THE COMPETENT DIVISION OF R&D DEPARTMENT EXCEPT AS AUTHORIZED BY COMPAL ELECTRONICS, INC. NEITHER THIS SHEET NOR THE INFORMATION IT CONTAINS MAY BE USED BY OR DISCLOSED TO ANY THIRD PARTY WITHOUT PRIOR WRITTEN CONSENT OF COMPAL ELECTRONICS, INC.					
Size	Custom	Document Number	Q1VZC M/B LA-8941P Schematic		Rev
Date:	Friday, April 20, 2012	Sheet	8	of	45

INTEL Recommend VAXG  
2\*470uF,6\*22uF(0805) and 6\*10uF(0603)  
11\*1U(0402)  
PD0.8

INTEL Recommend VCCPLL  
1\*330uF,2\*1uF(0402)  
PD0.8

SGA00001700 S POLY C 220U  
220U 2.5V M B2 ESR35 TPE H1.9

SGA20331E10 S POLY C 330U  
2V Y D2 LESR9M EEFSX H1.9

INTEL Recommend VCCSA  
1\*330uF,5\*10uF(0603) ,5\*1uF(0402)  
PD0.8

DC 16A

CR CheckList Rev1.5

Place TOP IN BGA

Place BOT OUT BGA

1.2A

6A

UCPU1G

VAXG[1]  
VAXG[2]  
VAXG[3]  
VAXG[4]  
VAXG[5]  
VAXG[6]  
VAXG[7]  
VAXG[8]  
VAXG[9]  
VAXG[10]  
VAXG[11]  
VAXG[12]  
VAXG[13]  
VAXG[14]  
VAXG[15]  
VAXG[16]  
VAXG[17]  
VAXG[18]  
VAXG[19]  
VAXG[20]  
VAXG[21]  
VAXG[22]  
VAXG[23]  
VAXG[24]  
VAXG[25]  
VAXG[26]  
VAXG[27]  
VAXG[28]  
VAXG[29]  
VAXG[30]  
VAXG[31]  
VAXG[32]  
VAXG[33]  
VAXG[34]  
VAXG[35]  
VAXG[36]  
VAXG[37]  
VAXG[38]  
VAXG[39]  
VAXG[40]  
VAXG[41]  
VAXG[42]  
VAXG[43]  
VAXG[44]  
VAXG[45]  
VAXG[46]  
VAXG[47]  
VAXG[48]  
VAXG[49]  
VAXG[50]  
VAXG[51]  
VAXG[52]  
VAXG[53]  
VAXG[54]  
VAXG[55]  
VAXG[56]

VAXG\_SENSE  
VSSAXG\_SENSE

VCCPLL[1]  
VCCPLL[2]  
VCCPLL[3]

VCCSA[1]  
VCCSA[2]  
VCCSA[3]  
VCCSA[4]  
VCCSA[5]  
VCCSA[6]  
VCCSA[7]  
VCCSA[8]  
VCCSA[9]  
VCCSA[10]  
VCCSA[11]  
VCCSA[12]  
VCCSA[13]  
VCCSA[14]  
VCCSA[15]  
VCCSA[16]

HY-BRIDGE\_BGA1023  
C867@

## POWER

DDR3 - 1.5V RAILS

QUIET RAILS

1.8V RAIL

SA RAIL

VCCSA VID Lines

SM\_VREF  
SA\_DIMM\_VREFDQ  
SB\_DIMM\_VREFDQ

5A

VDDQ[1]  
VDDQ[2]  
VDDQ[3]  
VDDQ[4]  
VDDQ[5]  
VDDQ[6]  
VDDQ[7]  
VDDQ[8]  
VDDQ[9]  
VDDQ[10]  
VDDQ[11]  
VDDQ[12]  
VDDQ[13]  
VDDQ[14]  
VDDQ[15]  
VDDQ[16]  
VDDQ[17]  
VDDQ[18]  
VDDQ[19]  
VDDQ[20]  
VDDQ[21]  
VDDQ[22]  
VDDQ[23]  
VDDQ[24]  
VDDQ[25]  
VDDQ[26]

VCCDQ[1]  
VCCDQ[2]

VDDQ\_SENSE  
VSS\_SENSE\_VDDQ

VCCSA\_SENSE

VCCSA\_VID[0]  
VCCSA\_VID[1]

VCCSA\_VID[0]  
VCCSA\_VID[1]

VCCSA\_VID[0]  
VCCSA\_VID[1]

VCCSA\_VID[0]  
VCCSA\_VID[1]

VCCSA\_VID[0]  
VCCSA\_VID[1]

AY43 +V SM\_VREF

BE7 SA\_DIMM\_VREFDQ  
BG7 SB\_DIMM\_VREFDQ

SA\_DIMM\_VREFDQ  
SB\_DIMM\_VREFDQ

SA\_DIMM\_VREFDQ  
SB\_DIMM\_VREFDQ

SA\_DIMM\_VREFDQ  
SB\_DIMM\_VREFDQ

SA\_DIMM\_VREFDQ  
SB\_DIMM\_VREFDQ

SA\_DIMM\_VREFDQ  
SB\_DIMM\_VREFDQ

SA\_DIMM\_VREFDQ  
SB\_DIMM\_VREFDQ

SA\_DIMM\_VREFDQ  
SB\_DIMM\_VREFDQ

SA\_DIMM\_VREFDQ  
SB\_DIMM\_VREFDQ

SA\_DIMM\_VREFDQ  
SB\_DIMM\_VREFDQ

SA\_DIMM\_VREFDQ  
SB\_DIMM\_VREFDQ

SA\_DIMM\_VREFDQ  
SB\_DIMM\_VREFDQ

SA\_DIMM\_VREFDQ  
SB\_DIMM\_VREFDQ

SA\_DIMM\_VREFDQ  
SB\_DIMM\_VREFDQ

SA\_DIMM\_VREFDQ  
SB\_DIMM\_VREFDQ

SA\_DIMM\_VREFDQ  
SB\_DIMM\_VREFDQ

SA\_DIMM\_VREFDQ  
SB\_DIMM\_VREFDQ

SA\_DIMM\_VREFDQ  
SB\_DIMM\_VREFDQ

SA\_DIMM\_VREFDQ  
SB\_DIMM\_VREFDQ

SA\_DIMM\_VREFDQ  
SB\_DIMM\_VREFDQ

SA\_DIMM\_VREFDQ  
SB\_DIMM\_VREFDQ

SA\_DIMM\_VREFDQ  
SB\_DIMM\_VREFDQ

SA\_DIMM\_VREFDQ  
SB\_DIMM\_VREFDQ

SA\_DIMM\_VREFDQ  
SB\_DIMM\_VREFDQ

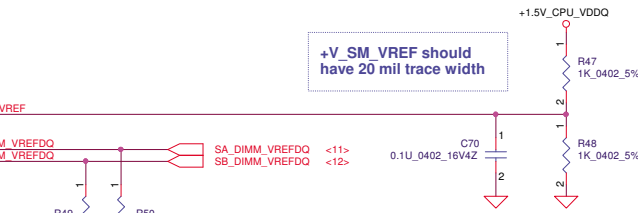
SA\_DIMM\_VREFDQ  
SB\_DIMM\_VREFDQ

SA\_DIMM\_VREFDQ  
SB\_DIMM\_VREFDQ

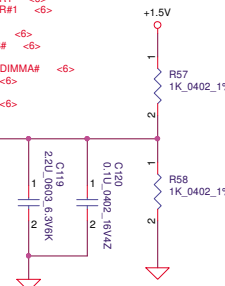
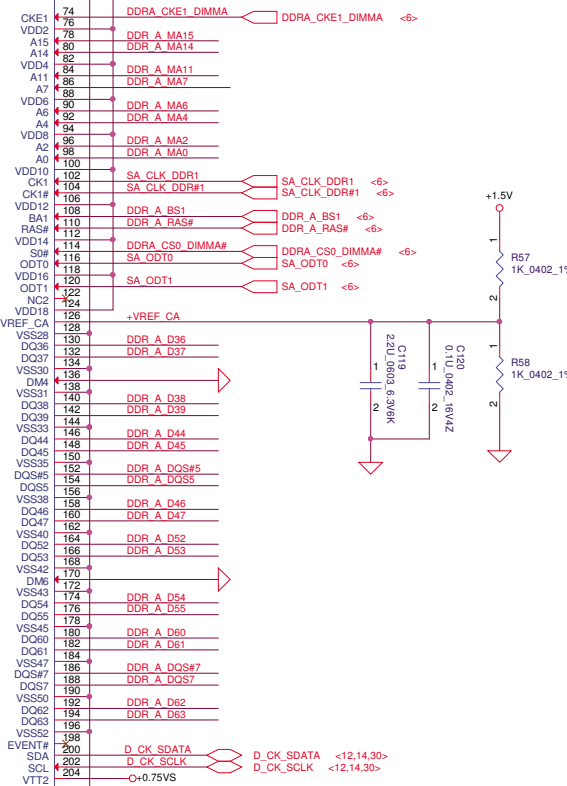
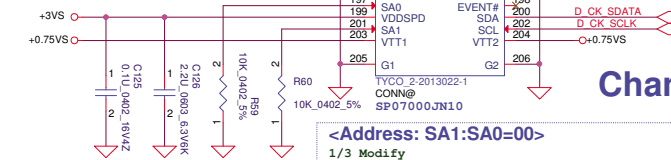
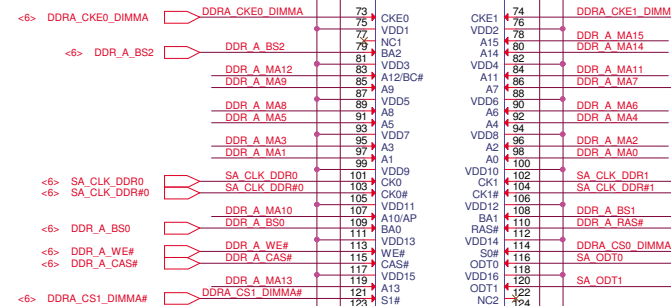
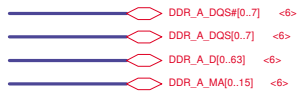
SA\_DIMM\_VREFDQ  
SB\_DIMM\_VREFDQ

SA\_DIMM\_VREFDQ  
SB\_DIMM\_VREFDQ

SA\_DIMM\_VREFDQ  
SB\_DIMM\_VREFDQ

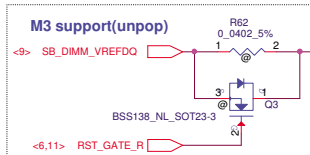






## Channel A

Security Classification		Compal Secret Data		Compal Electronics, Inc.				
Issued Date		2011/11/22	Deciphered Date	2012/11/22	Title			
THIS SHEET OF ENGINEERING DRAWING IS THE PROPRIETARY PROPERTY OF COMPAL ELECTRONICS, INC. AND CONTAINS CONFIDENTIAL AND TRADE SECRET INFORMATION. THIS SHEET MAY NOT BE TRANSFERRED FROM THE CUSTODY OF THE COMPETENT DIVISION OF R&D DEPARTMENT EXCEPT AS AUTHORIZED BY COMPAL ELECTRONICS, INC. NEITHER THIS SHEET NOR THE INFORMATION IT CONTAINS MAY BE USED BY OR DISCLOSED TO ANY THIRD PARTY WITHOUT PRIOR WRITTEN CONSENT OF COMPAL ELECTRONICS, INC.					DDRIII DIMMA			
					Size	Document Number		Rev
					Date	Q1VZC M/B LA-8941P Schematic		1.0
					Date:	Friday, April 20, 2012	Sheet	11



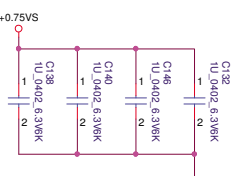
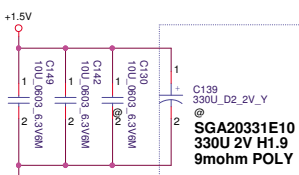
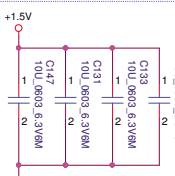
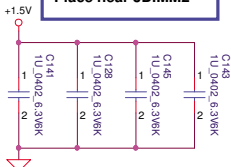
DDR\_B\_DQS#[0..7] <6>

DDR\_B\_DQS#[0..7] <6>

DDR\_B\_DQ[0..63] <6>

DDR\_B\_MA[0..15] <6>

**Layout Note:**  
Place near JDIMM2



**Layout Note:**  
Place near JDIMM2.203,204

All VREF traces should have 10 mil trace width

DDR\_B\_CKE0\_DIMMB <6>

DDR\_B\_BS2 <6>

DDR\_B\_MA12 <6>

DDR\_B\_MA9 <6>

DDR\_B\_MA8 <6>

DDR\_B\_MA5 <6>

DDR\_B\_MA3 <6>

DDR\_B\_MA1 <6>

SB\_CLK\_DDR0 <6>

SB\_CLK\_DDR#0 <6>

DDR\_B\_BS0 <6>

DDR\_B\_WE# <6>

DDR\_B\_CAS# <6>

DDR\_B\_MA13 <6>

DDR\_B\_CS1\_DIMMB# <6>

DDR\_B\_CKE1\_DIMMB <6>

DDR\_B\_MA15 <6>

DDR\_B\_MA14 <6>

DDR\_B\_MA11 <6>

DDR\_B\_MA7 <6>

DDR\_B\_MA6 <6>

DDR\_B\_MA4 <6>

DDR\_B\_MA2 <6>

DDR\_B\_MA0 <6>

SB\_CLK\_DDR1 <6>

SB\_CLK\_DDR#1 <6>

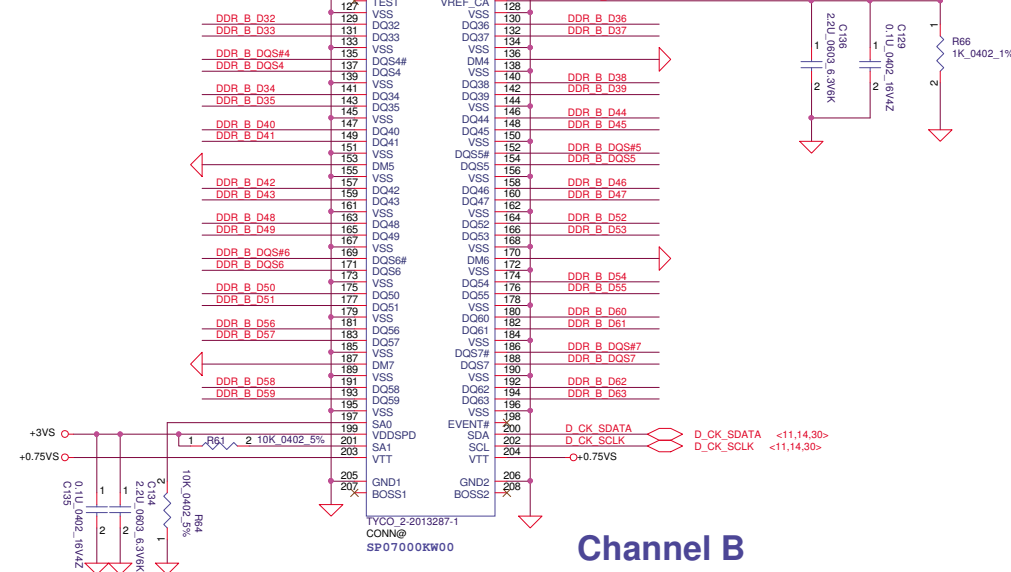
DDR\_B\_BS1 <6>

DDR\_B\_RAS# <6>

DDR\_B\_CS0\_DIMMB# <6>

SB\_ODT0 <6>

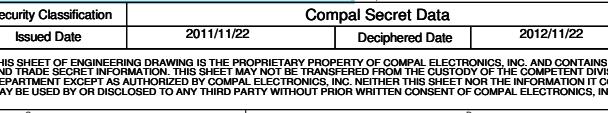
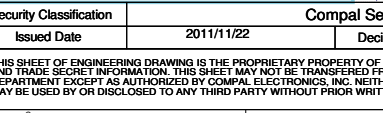
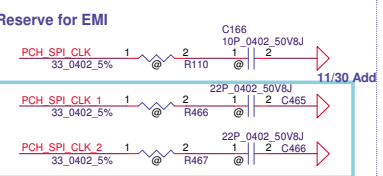
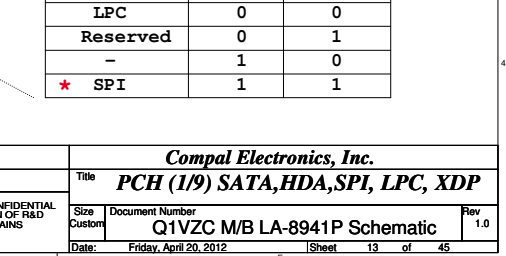
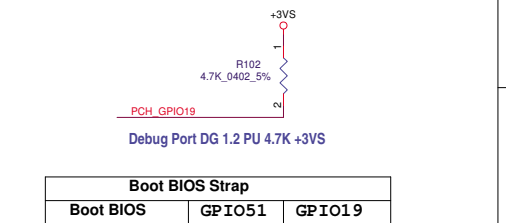
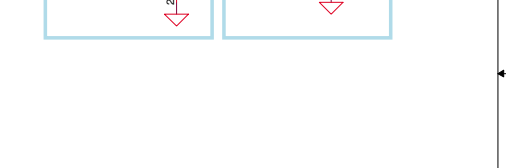
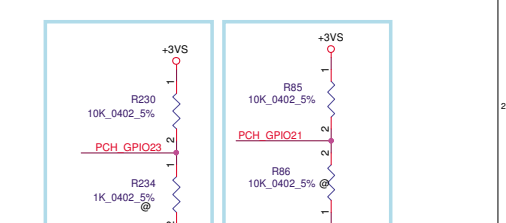
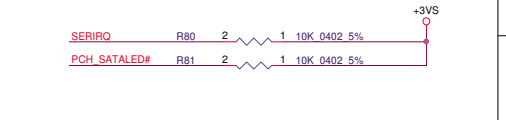
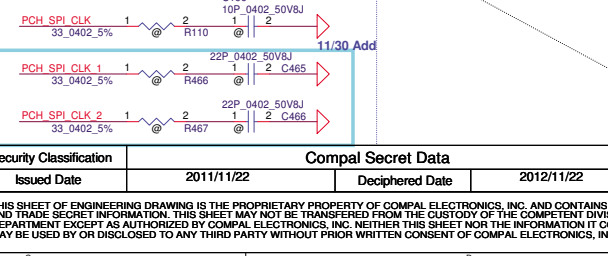
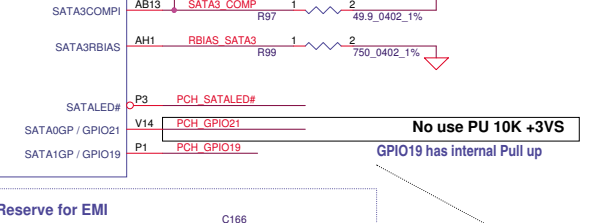
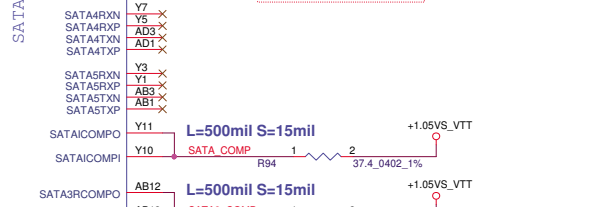
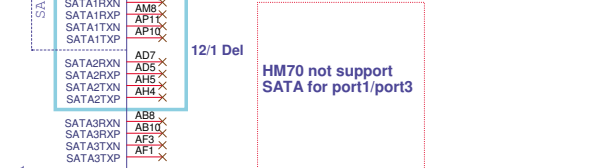
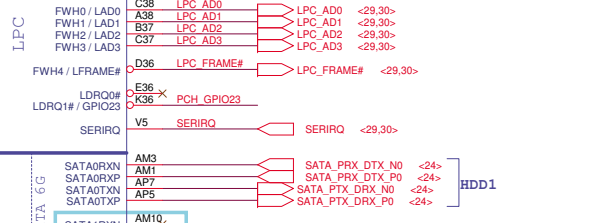
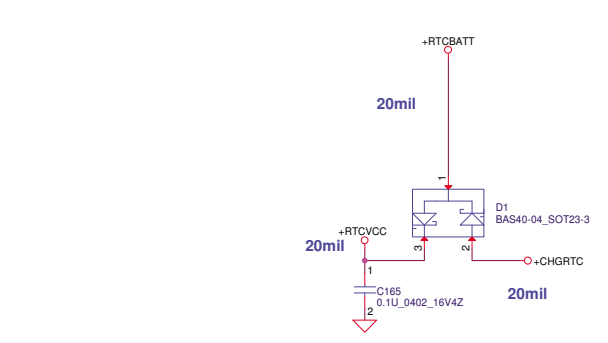
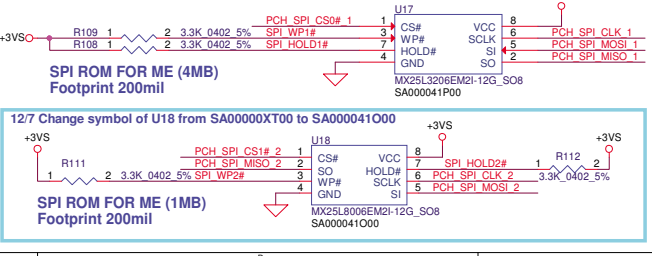
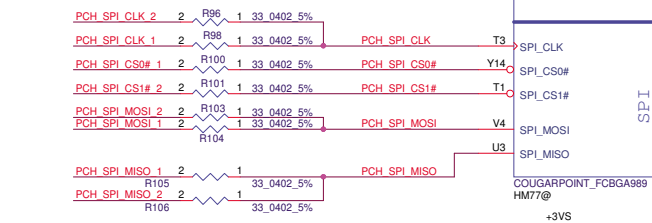
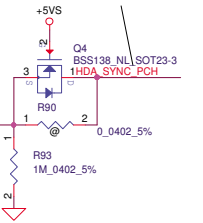
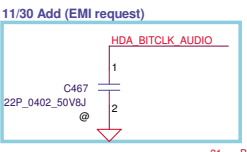
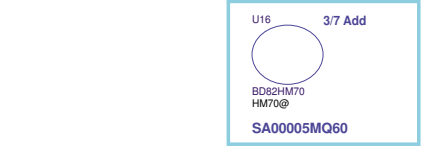
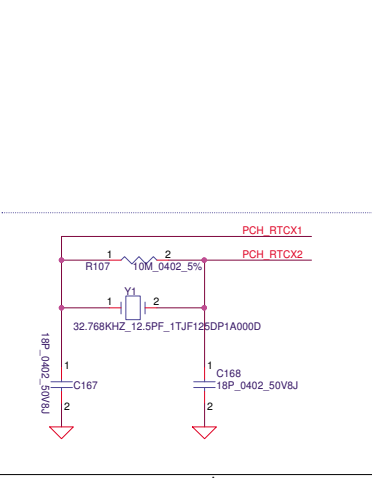
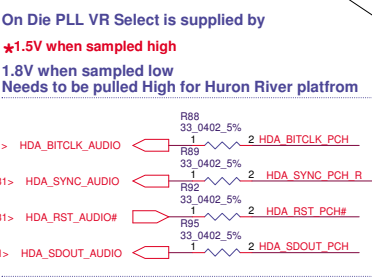
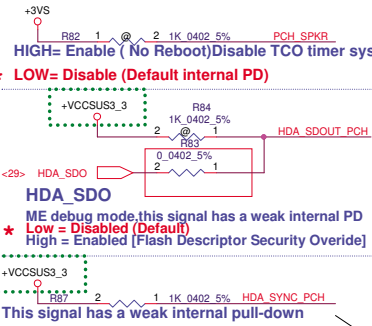
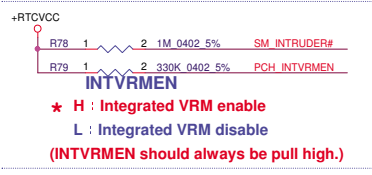
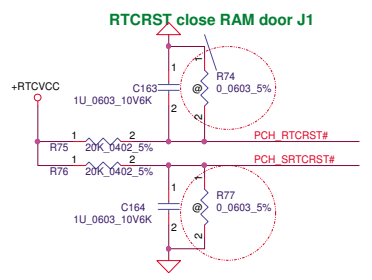
SB\_ODT1 <6>



<Address: SA1:SA0=10>  
12/21 Modify  
**DIMM\_2 Reverse H:4.0mm**

**Channel B**

Security Classification		Compal Secret Data		Compal Electronics, Inc.	
Issued Date		2011/11/22		DDR/III DIMMB	
Deciphered Date		2012/11/22		Q1VZC M/B LA-8941P Schematic	
Title		Size		Rev	
Document Number		Q1VZC M/B LA-8941P Schematic		1.0	
Date:		Friday, April 20, 2012		Sheet 12 of 45	



Boot BIOS Strap		
Boot BIOS	GPIO51	GPIO19
LPC	0	0
Reserved	0	1
-	1	0
★ SPI	1	1

Security Classification			Compal Secret Data			Title		
Issued Date			Deciphered Date			PCH (1/9) SATA,HDA,SPI, LPC, XDP		
2011/11/22			2012/11/22			Q1VZC M/B LA-8941P Schematic		
THIS SHEET OF ENGINEERING DRAWING IS THE PROPRIETARY PROPERTY OF COMPAL ELECTRONICS, INC. AND CONTAINS CONFIDENTIAL AND TRADE SECRET INFORMATION. THIS SHEET MAY NOT BE TRANSFERRED FROM THE CUSTODY OF THE COMPETENT DIVISION OF R&D DEPARTMENT EXCEPT AS AUTHORIZED BY COMPAL ELECTRONICS, INC. NEITHER THIS SHEET NOR THE INFORMATION IT CONTAINS MAY BE USED BY OR DISCLOSED TO ANY THIRD PARTY WITHOUT PRIOR WRITTEN CONSENT OF COMPAL ELECTRONICS, INC.			Size			Rev		
Document Number			1.0			1.0		
Date			Friday, April 20, 2012			Sheet 13 of 45		

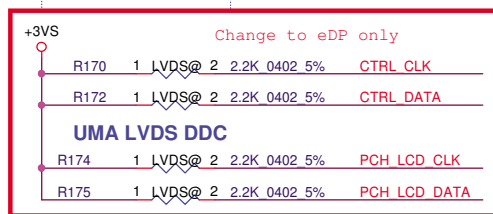




# UMA Panel Backlight ON/OFF

<29> ENBKL ← ENBKL R169 2 1 0.0402 5% IGPU BKLT\_EN

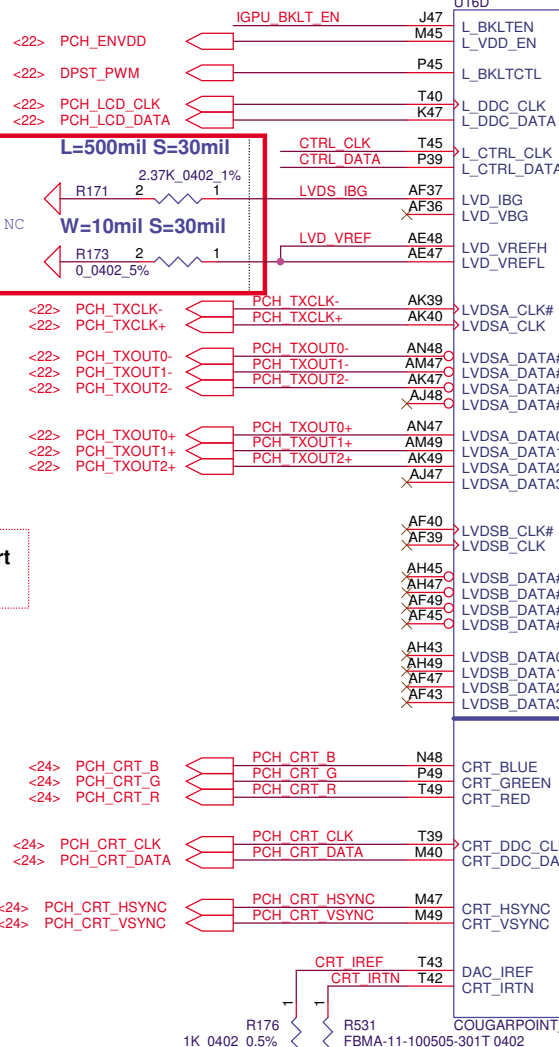
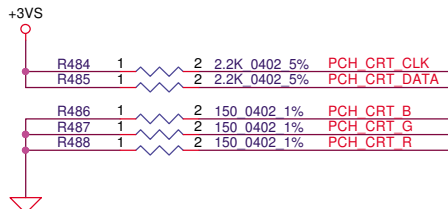
PD 100K  
at EC side



Check list1.5 P.60 disable Graphics  
ALL Can NC  
but DAC\_IREF still need PD

LVDS disable:  
DATA/Clock/Control an NC  
VCC\_TX\_LVDS,VCCA\_LVDS PD to GND

UM77 not support  
LVDS/CRT



U16D

L\_BKLTEN

L\_VDD\_EN M45

L\_BKLTCTL P45

L\_DDC\_CLK T40

L\_DDC\_DATA K47

L\_CTRL\_CLK T45

L\_CTRL\_DATA P39

LVD\_IBG AF37

LVD\_VBG AF36

LVD\_VREFH AE48

LVD\_VREFL AE47

LVDSA\_CLK# AK39

LVDSA\_CLK AK40

LVDSA\_DATA#0 AN48

LVDSA\_DATA#1 AM47

LVDSA\_DATA#2 AK47

LVDSA\_DATA#3 AJ48

LVDSA\_DATA0 AN47

LVDSA\_DATA1 AM49

LVDSA\_DATA2 AK49

LVDSA\_DATA3 AJ47

LVDSB\_CLK# AF40

LVDSB\_CLK AF39

LVDSB\_DATA#0 AH45

LVDSB\_DATA#1 AH47

LVDSB\_DATA#2 AF49

LVDSB\_DATA#3 AF45

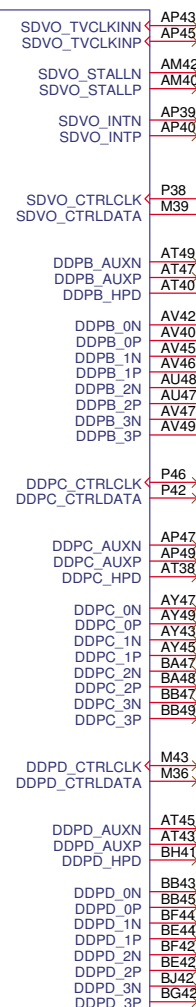
LVDSB\_DATA0 AH43

LVDSB\_DATA1 AH49

LVDSB\_DATA2 AF47

LVDSB\_DATA3 AF43

Digital Display Interface



SDVO\_CTRLDATA strap pull high  
at level shift page

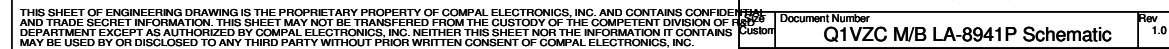
HDMI D2

HDMI D1

HDMI D0

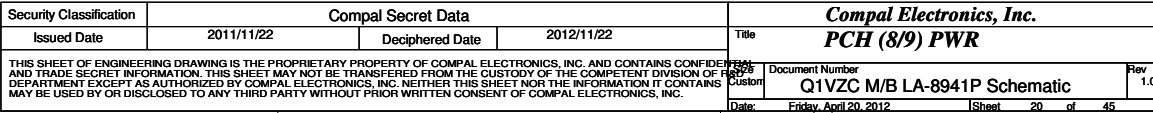
HDMI CLK

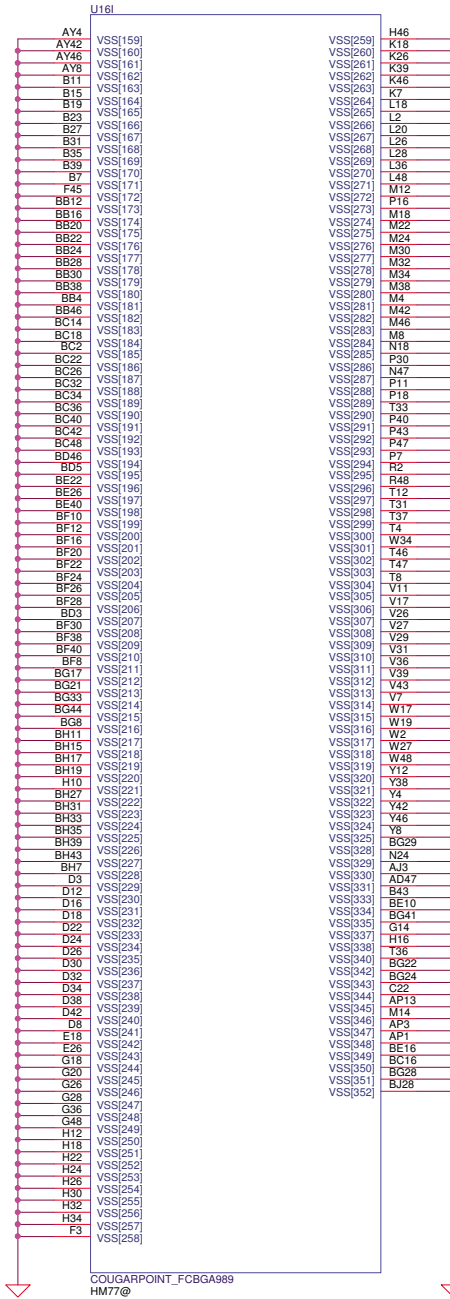
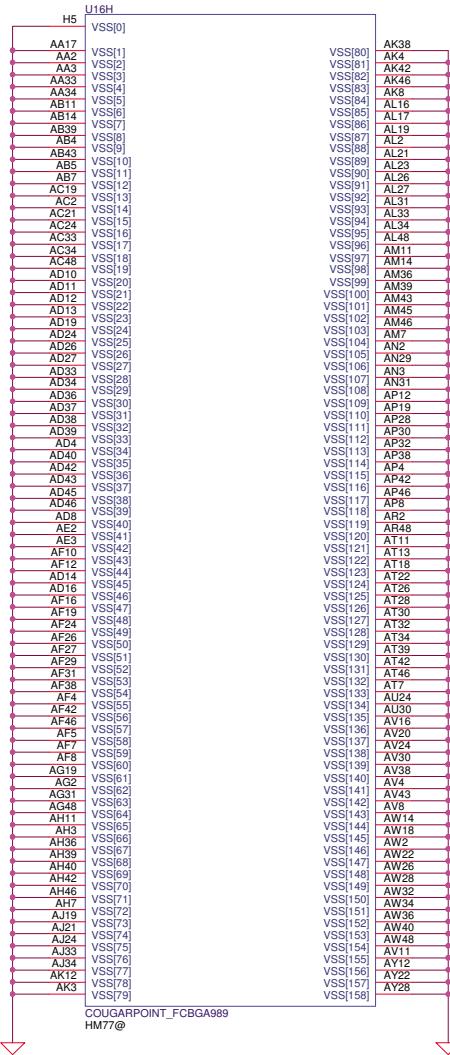
Security Classification	Compal Secret Data			Compal Electronics, Inc.		
Issued Date	2011/11/22	Deciphered Date	2012/11/22	Title		
THIS SHEET OF ENGINEERING DRAWING IS THE PROPRIETARY PROPERTY OF COMPAL ELECTRONICS, INC. AND CONTAINS CONFIDENTIAL AND TRADE SECRET INFORMATION. THIS SHEET MAY NOT BE TRANSFERRED FROM THE CUSTODY OF THE COMPETENT DIVISION OF R&D DEPARTMENT EXCEPT AS AUTHORIZED BY COMPAL ELECTRONICS, INC. NEITHER THIS SHEET NOR THE INFORMATION IT CONTAINS MAY BE USED BY OR DISCLOSED TO ANY THIRD PARTY WITHOUT PRIOR WRITTEN CONSENT OF COMPAL ELECTRONICS, INC.				PCH (4/9) LVDS,CRT,DP,HDMI		
Size	Custom	Document Number	Q1VZC M/B LA-8941P Schematic	Rev	1.0	
Date:	Friday, April 20, 2012	Sheet	16	of	45	



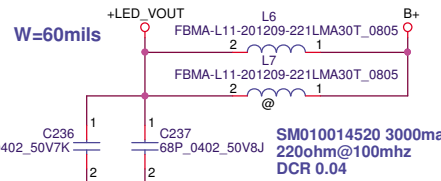
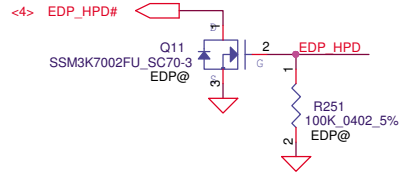
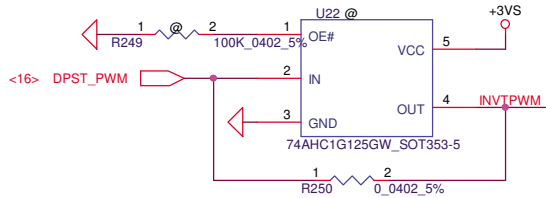
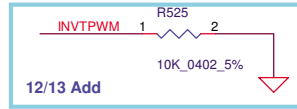
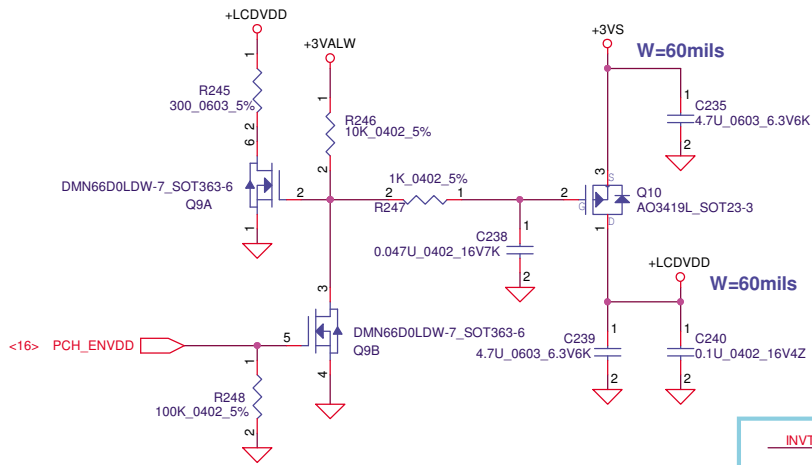




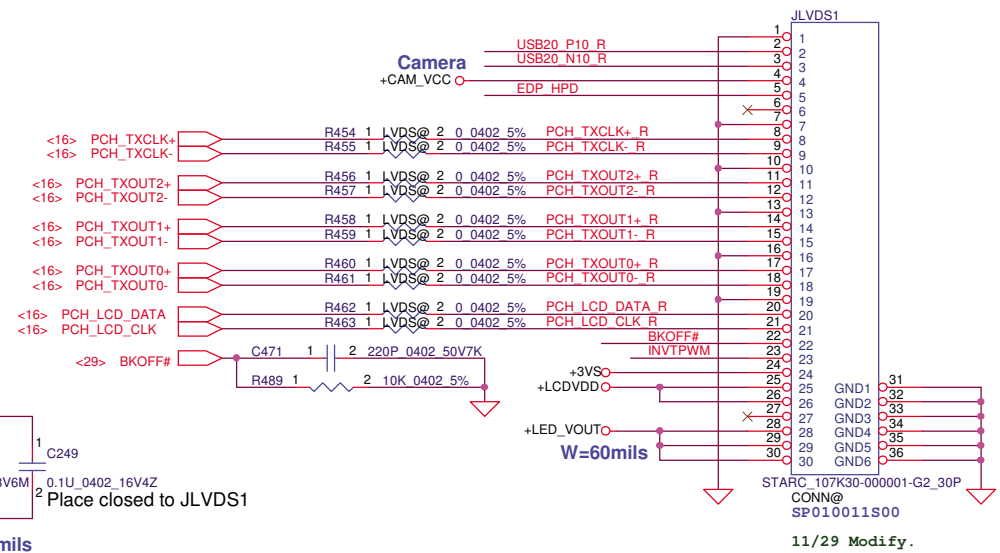




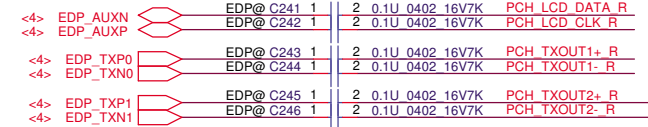
# LCD POWER CIRCUIT



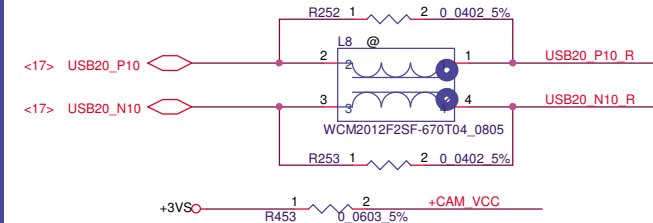
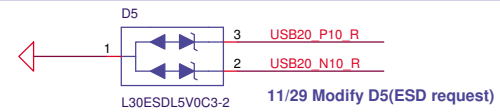
## LCD/LED PANEL Conn.



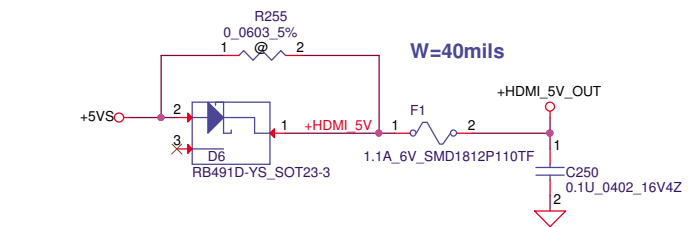
## eDP



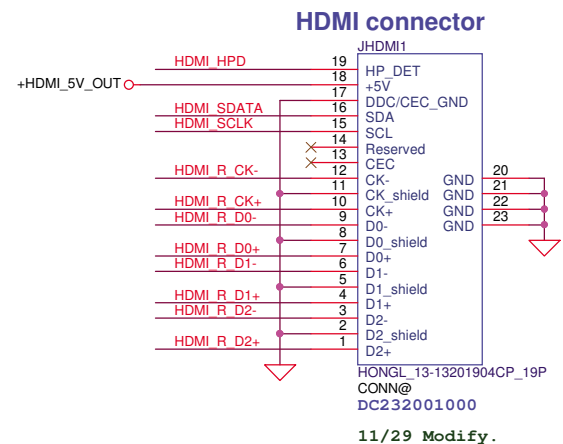
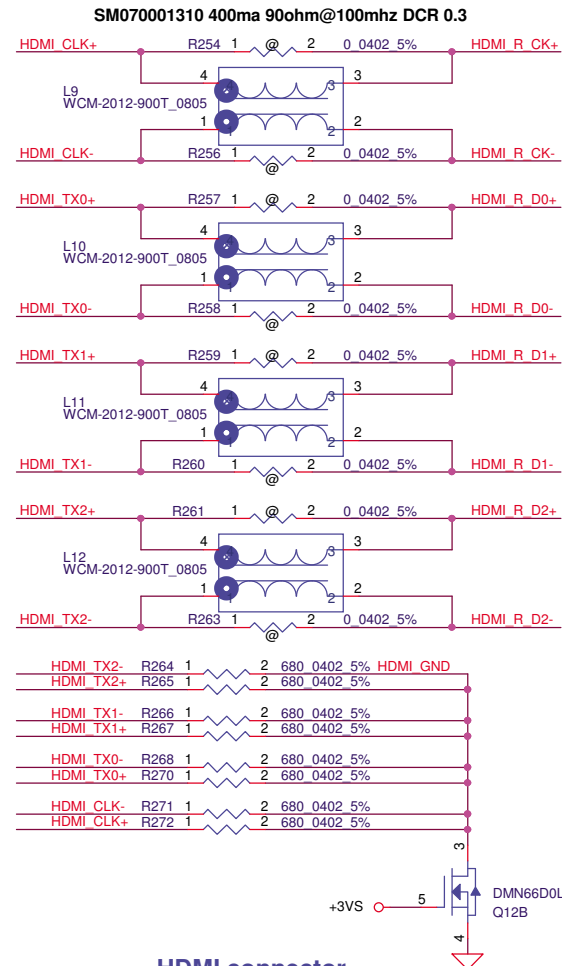
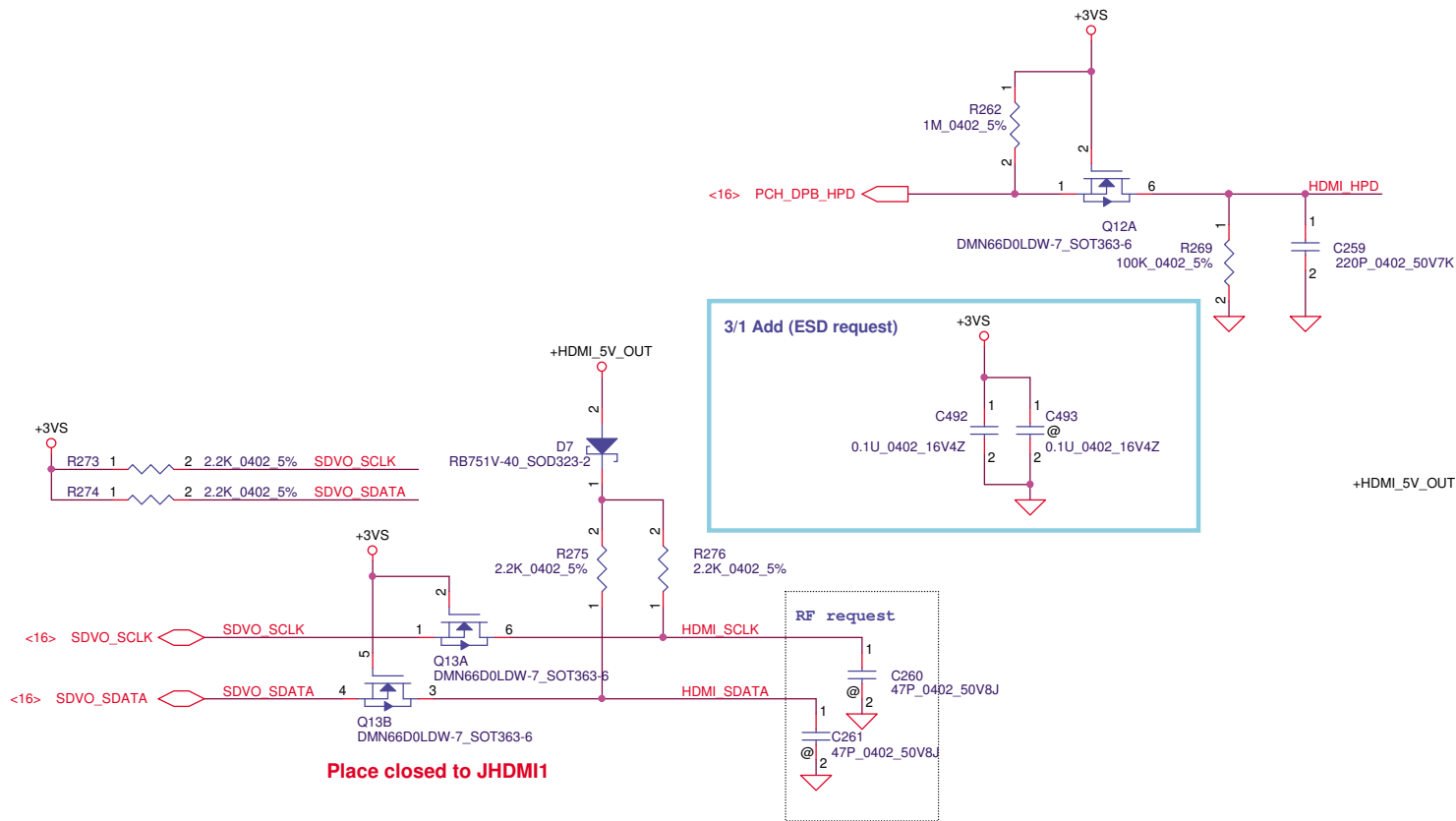
## Camera



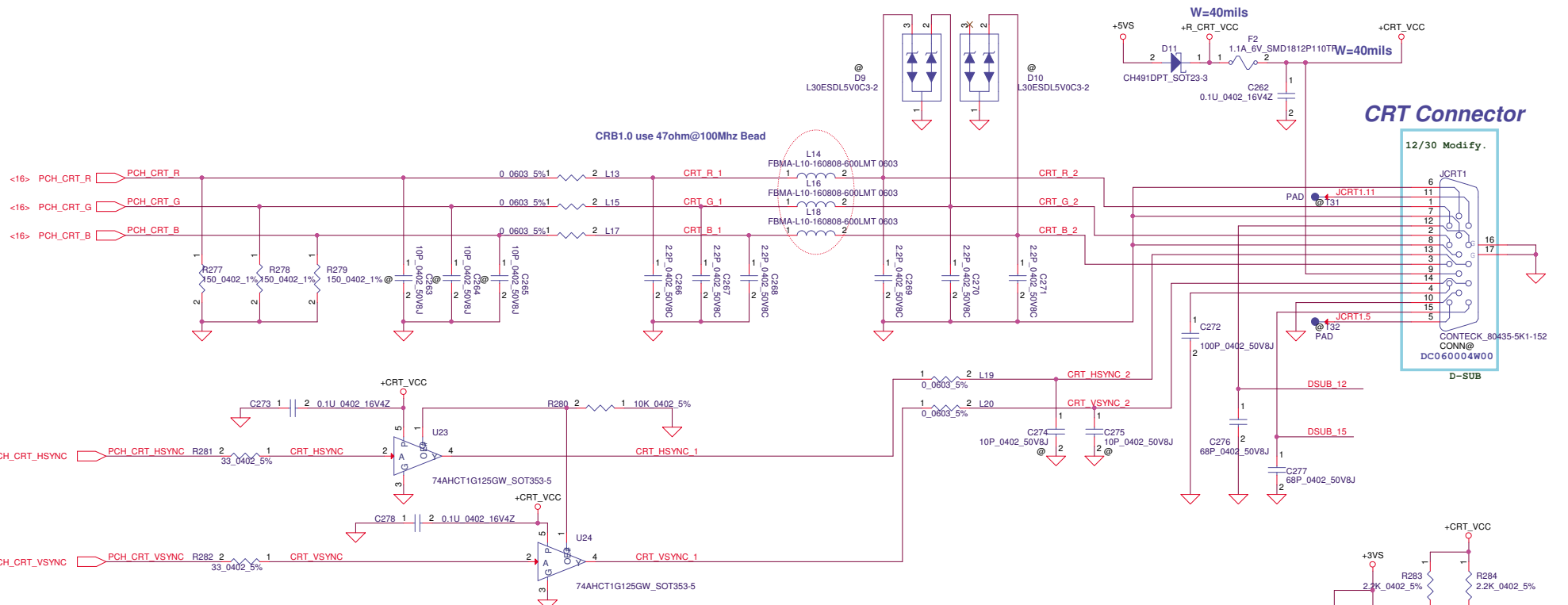
Security Classification		Compal Secret Data				Compal Electronics, Inc.						
Issued Date		2011/11/22		Deciphered Date		2012/11/22		Title				
								LVDS&eDP				
THIS SHEET OF ENGINEERING DRAWING IS THE PROPRIETARY PROPERTY OF COMPAL ELECTRONICS, INC. AND CONTAINS CONFIDENTIAL AND TRADE SECRET INFORMATION. THIS SHEET MAY NOT BE TRANSFERRED FROM THE CUSTODY OF THE COMPETENT DIVISION OF R&D DEPARTMENT EXCEPT AS AUTHORIZED BY COMPAL ELECTRONICS, INC. NEITHER THIS SHEET NOR THE INFORMATION IT CONTAINS MAY BE USED BY OR DISCLOSED TO ANY THIRD PARTY WITHOUT PRIOR WRITTEN CONSENT OF COMPAL ELECTRONICS, INC.						Size	Document Number		Rev			
						Custom	Q1VZC M/B LA-8941P Schematic		1.0			
						Date:		Friday, April 20, 2012		Sheet	22 of 45	



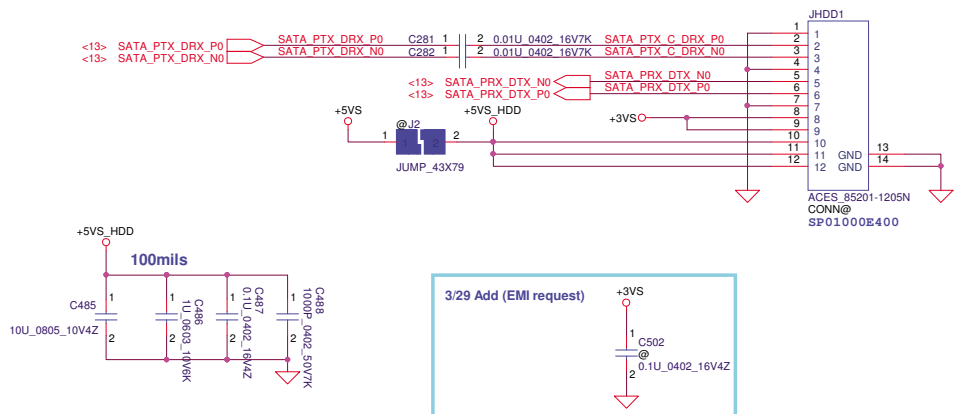
<16>	PCH_DPB_N0	C251	2	1	0.1U_0402_16V7K	HDMI TX2-
<16>	PCH_DPB_P0	C252	2	1	0.1U_0402_16V7K	HDMI TX2+
<16>	PCH_DPB_N1	C253	2	1	0.1U_0402_16V7K	HDMI TX1-
<16>	PCH_DPB_P1	C254	2	1	0.1U_0402_16V7K	HDMI TX1+
<16>	PCH_DPB_N2	C255	2	1	0.1U_0402_16V7K	HDMI TX0-
<16>	PCH_DPB_P2	C256	2	1	0.1U_0402_16V7K	HDMI TX0+
<16>	PCH_DPB_N3	C257	2	1	0.1U_0402_16V7K	HDMI CLK-
<16>	PCH_DPB_P3	C258	2	1	0.1U_0402_16V7K	HDMI CLK+



Security Classification		Compal Secret Data		Compal Electronics, Inc.	
Issued Date	2011/11/22	Deciphered Date	2012/11/22	Title	
THIS SHEET OF ENGINEERING DRAWING IS THE PROPRIETARY PROPERTY OF COMPAL ELECTRONICS, INC. AND CONTAINS CONFIDENTIAL AND TRADE SECRET INFORMATION. THIS SHEET MAY NOT BE TRANSFERRED FROM THE CUSTODY OF THE COMPETENT DIVISION OF R&D DEPARTMENT EXCEPT AS AUTHORIZED BY COMPAL ELECTRONICS, INC. NEITHER THIS SHEET NOR THE INFORMATION IT CONTAINS MAY BE USED BY OR DISCLOSED TO ANY THIRD PARTY WITHOUT PRIOR WRITTEN CONSENT OF COMPAL ELECTRONICS, INC.				HDMI Conn	
Size		Document Number		Rev	
Custom		Q1VZC M/B LA-8941P Schematic		1.0	
Date:		Friday, April 20, 2012		Sheet 23 of 45	



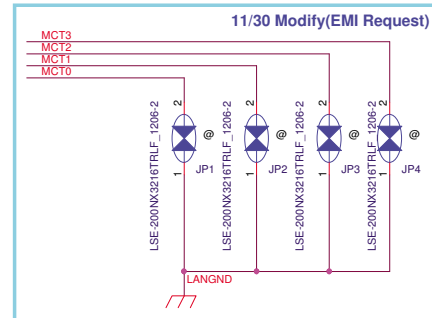
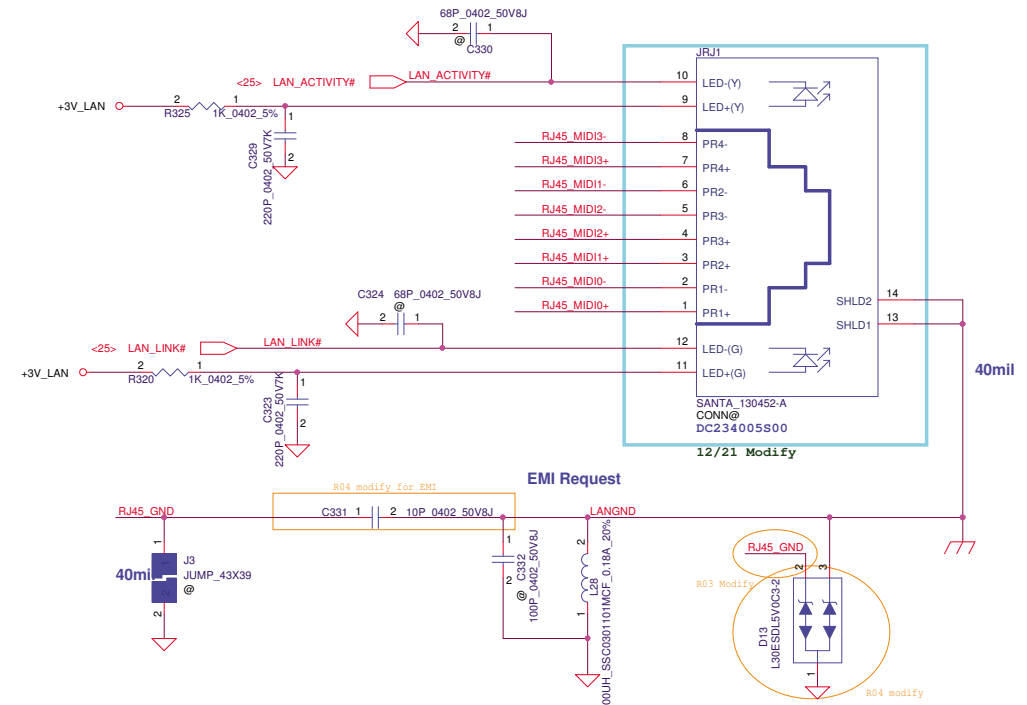
### HDD Board Conn



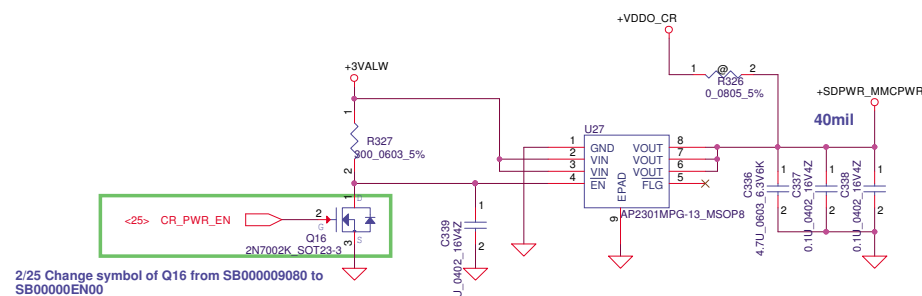
Security Classification		Compal Secret Data		Compal Electronics, Inc.	
Issued Date	2011/11/22	Deciphered Date	2012/11/22	Title	
THIS SHEET OF ENGINEERING DRAWING IS THE PROPRIETARY PROPERTY OF COMPAL ELECTRONICS, INC. AND CONTAINS CONFIDENTIAL AND TRADE SECRET INFORMATION. THIS SHEET MAY NOT BE TRANSFERRED FROM THE CUSTODY OF THE COMPETENT DIVISION OF COMPAL ELECTRONICS, INC. NEITHER THIS SHEET NOR THE INFORMATION IT CONTAINS MAY BE USED BY OR DISCLOSED TO ANY THIRD PARTY WITHOUT PRIOR WRITTEN CONSENT OF COMPAL ELECTRONICS, INC.				Document Number	Rev
				Q1VZC M/B LA-8941P Schematic	1.0
Date: Friday, April 20, 2012				Sheet	24 of 45



C474,C475 and D14  
ME interfere,do not pop!!



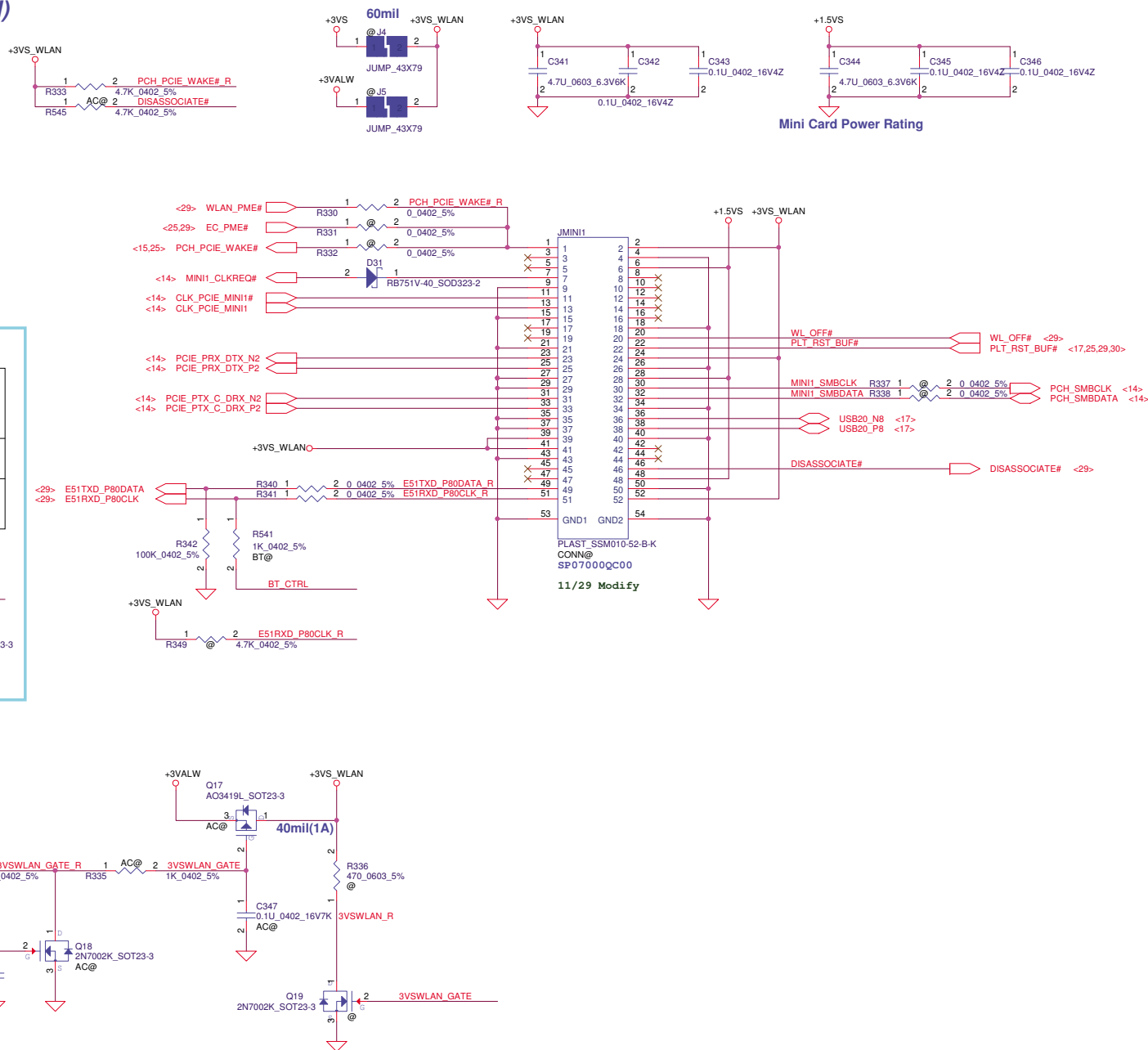
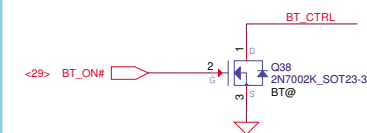
+SDPWR\_MMCWPWR  
 <25> CR\_CMD  
 <25> CR\_CLK  
 R559 2 1 0 0402 5%  
 <25> CR\_DATA0  
 <25> CR\_DATA1  
 <25> CR\_DATA2  
 <25> CR\_DATA3  
 <25> CR\_WP#  
 <25> CR\_DETECT  
 JREAD1  
 3 CMD  
 4 VSS  
 5 VDD  
 6 CLK  
 7 VSS  
 8 DAT0  
 9 DAT1  
 10 DAT2  
 11 CD/DAT3  
 12 WP SW  
 13 CD SW  
 14 GND SW  
 15 GND SW  
 T-SOL 156-1000302601\_11P  
 CONN@  
 SP07000TF00  
 12/23 Modify (2in1 CARD READER)  
 (板上2.85mm)



Security Classification		Compal Secret Data		Compal Electronics, Inc.	
Issued Date	2011/11/22	Deciphered Date	2012/11/22	Title	Card Reader
THIS SHEET OF ENGINEERING DRAWING IS THE PROPRIETARY PROPERTY OF COMPAL ELECTRONICS, INC. AND CONTAINS CONFIDENTIAL AND TRADE SECRET INFORMATION. THIS SHEET MAY NOT BE TRANSFERRED FROM THE CUSTODY OF THE COMPETENT DIVISION OF FACTORY DEPARTMENT EXCEPT AS AUTHORIZED BY COMPAL ELECTRONICS, INC. NEITHER THIS SHEET NOR THE INFORMATION IT CONTAINS MAY BE USED BY OR DISCLOSED TO ANY THIRD PARTY WITHOUT PRIOR WRITTEN CONSENT OF COMPAL ELECTRONICS, INC.				Docu- ment Number	Rev 1.0
				Custom Q1VZC M/B LA-8941P Schematic	
Date:	Friday, April 20, 2012	Sheet	26 of 45		

## WLAN&BT Combo module circuits

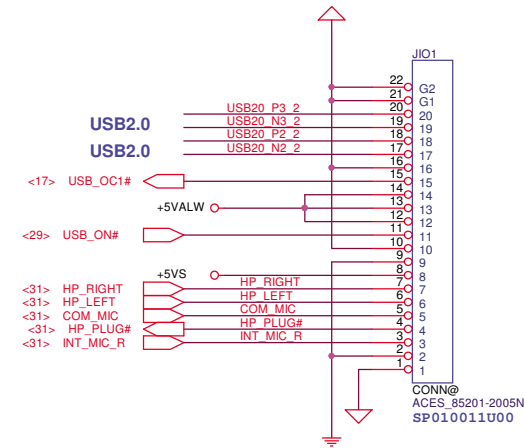
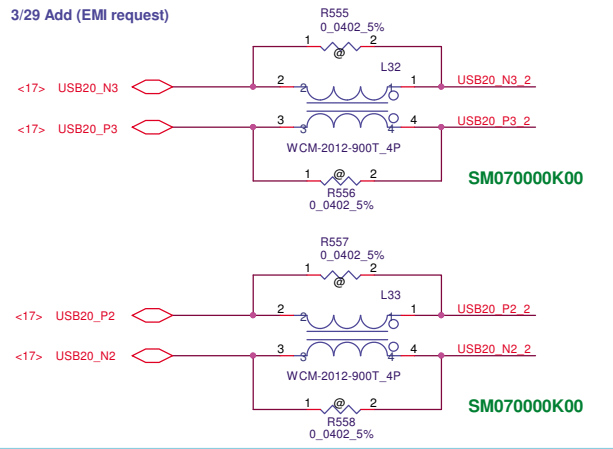
	BT on module Enable	BT on module Disable
BT_CTRL	H	L
BT_ON#	L	H



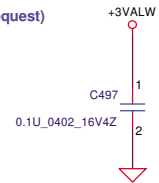
Security Classification	Compal Secret Data			Compal Electronics, Inc.		
Issued Date	2011/11/22	Deciphered Date	2012/11/22	Title	MINI CARD (WLAN)	
THIS SHEET OF ENGINEERING DRAWING IS THE PROPRIETARY PROPERTY OF COMPAL ELECTRONICS, INC. AND CONTAINS CONFIDENTIAL AND TRADE SECRET INFORMATION. THIS SHEET MAY NOT BE TRANSFERRED FROM THE CUSTODY OF THE COMPETENT DIVISION OF R&D DEPARTMENT EXCEPT AS AUTHORIZED BY COMPAL ELECTRONICS, INC. NEITHER THIS SHEET NOR THE INFORMATION IT CONTAINS MAY BE USED BY OR DISCLOSED TO ANY THIRD PARTY WITHOUT PRIOR WRITTEN CONSENT OF COMPAL ELECTRONICS, INC.				Size	Document Number	Rev
				Custom	Q1VZC M/B LA-8941P Schematic	1.0
				Date:	Friday, April 20, 2012	Sheet 27 of 45

# IO Board

## 3/29 Add (EMI request)

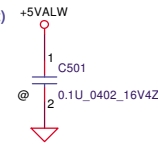


## 3/1 Add (ESD request)

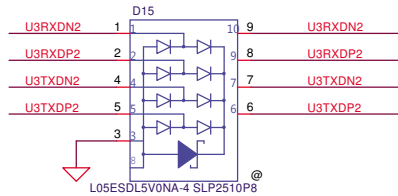


# USB3.0

## 3/29 Add (ESD request)



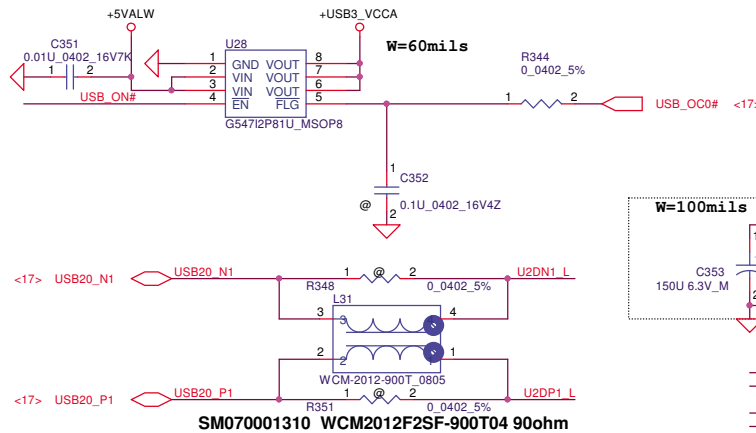
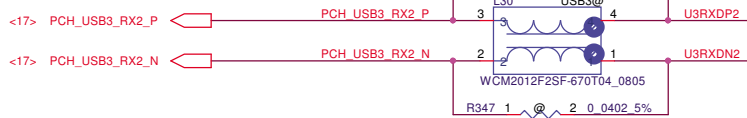
For ESD request



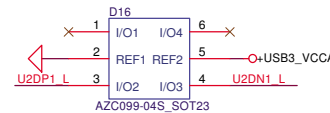
## SM070000S80 WCM2012F2SF-670T04 67ohm



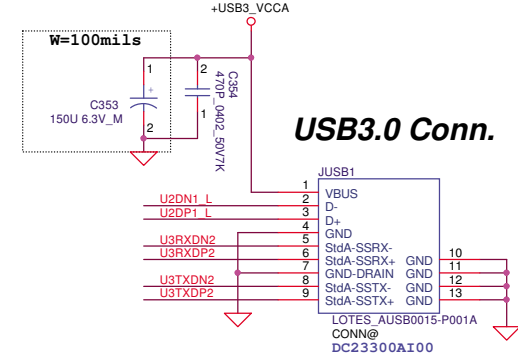
## SM070000S80 WCM2012F2SF-670T04 67ohm



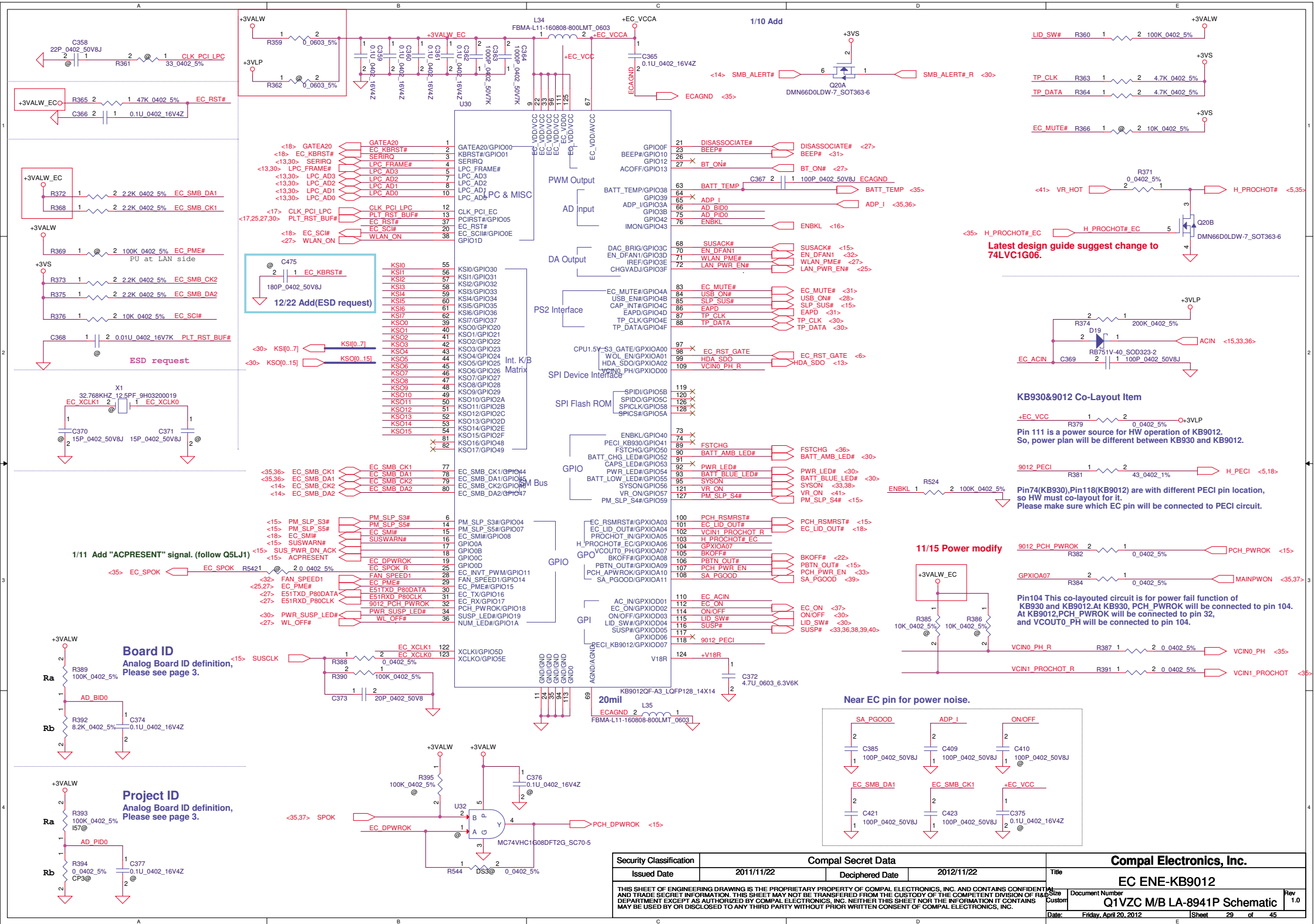
For USB2.0 ESD request

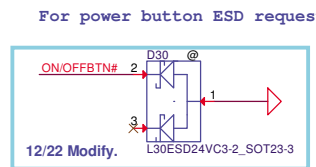
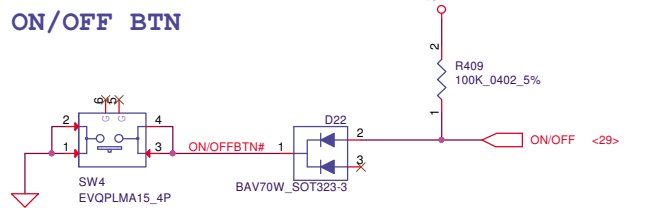
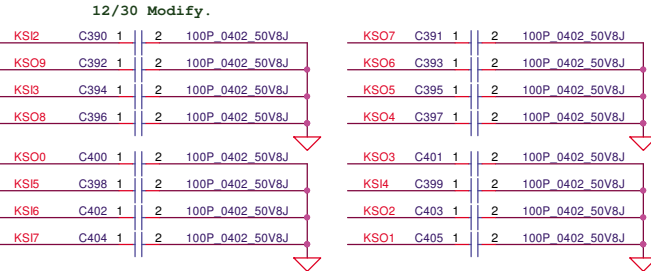
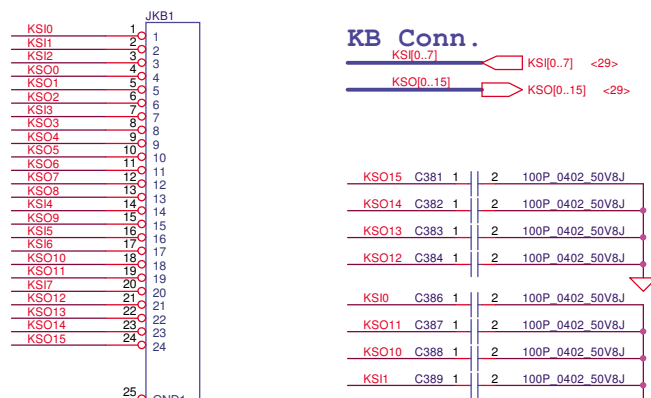


## USB3.0 Conn.

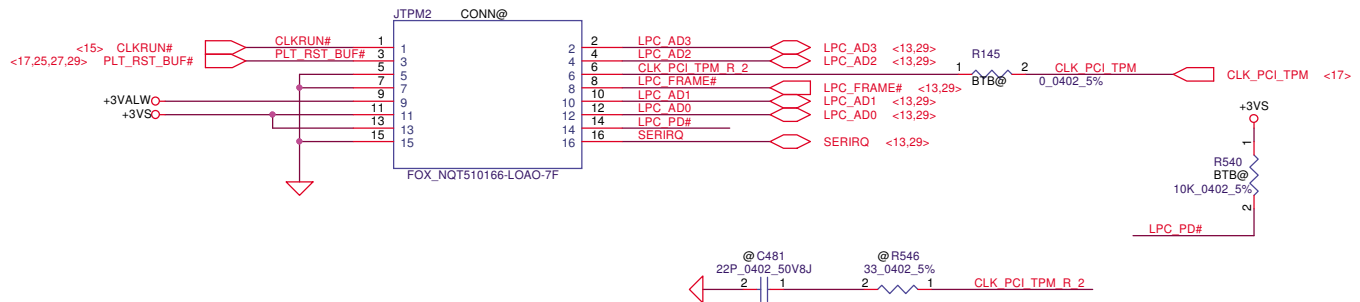


Security Classification		Compal Secret Data		Title	
Issued Date	2011/11/22	Deciphered Date	2012/11/22	IO Board & USB3.0	
THIS SHEET OF ENGINEERING DRAWING IS THE PROPRIETARY PROPERTY OF COMPAL ELECTRONICS, INC. AND CONTAINS CONFIDENTIAL AND TRADE SECRET INFORMATION. THIS SHEET MAY NOT BE TRANSFERRED FROM THE CUSTODY OF THE COMPETENT DIVISION OF R&D DEPARTMENT EXCEPT AS AUTHORIZED BY COMPAL ELECTRONICS, INC. NEITHER THIS SHEET NOR THE INFORMATION IT CONTAINS MAY BE USED BY OR DISCLOSED TO ANY THIRD PARTY WITHOUT PRIOR WRITTEN CONSENT OF COMPAL ELECTRONICS, INC.				Size Custom	Document Number Q1VZC M/B LA-8941P Schematic
Date:	Friday, April 20, 2012	Sheet	28 of 45	Rev	1.0

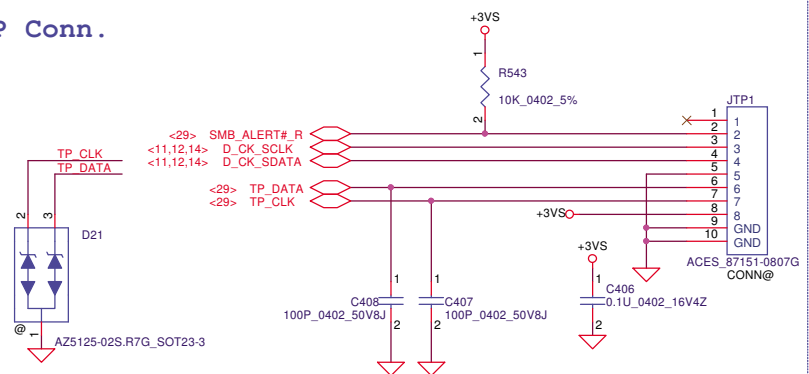




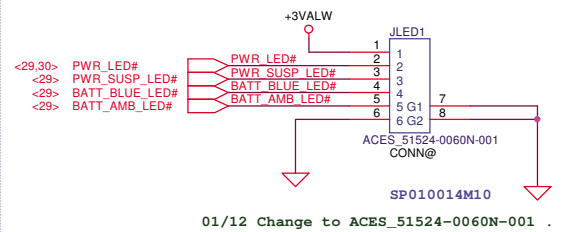
## TPM



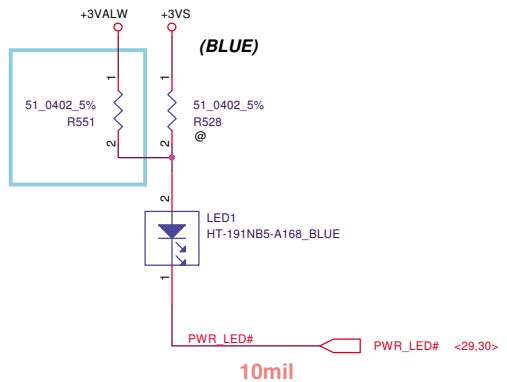
## TP Conn.



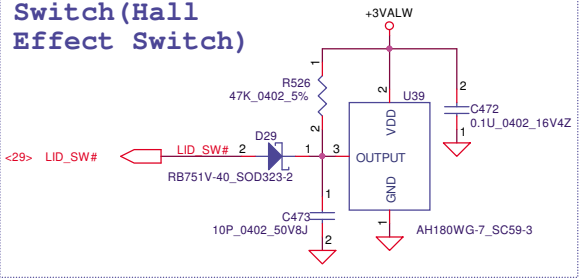
## LED Board



## Power LED

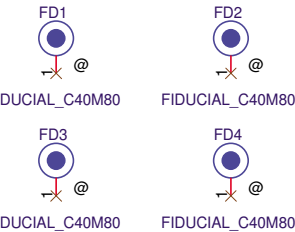
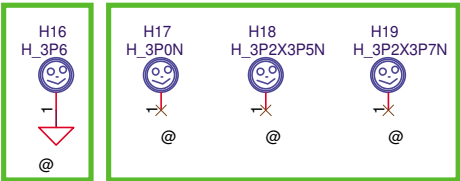
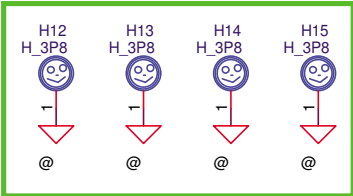
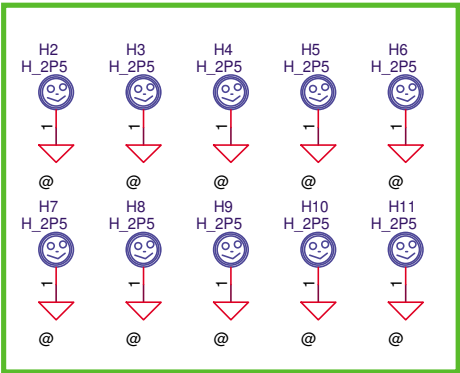
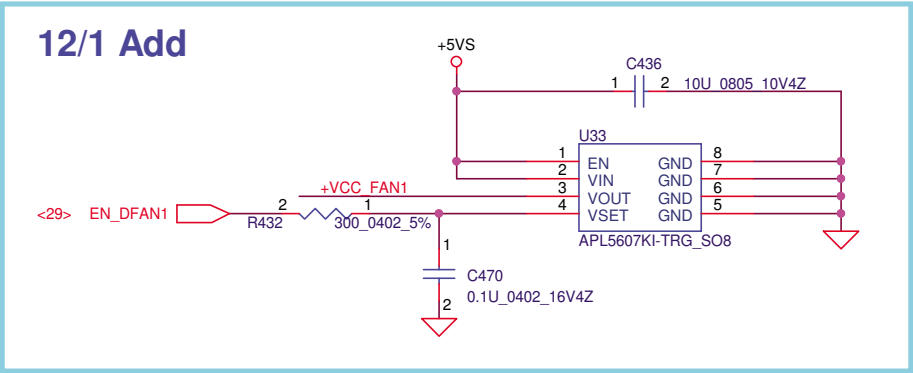
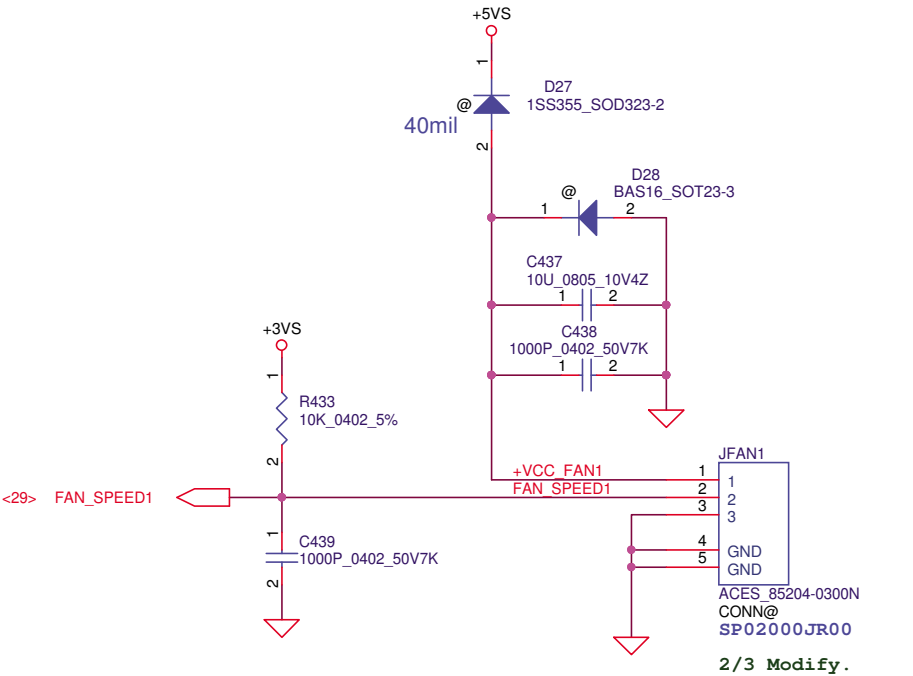


## Lid Switch(Hall Effect Switch)





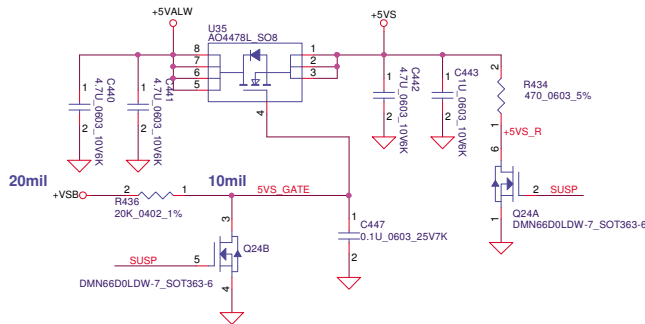
FAN1 Conn



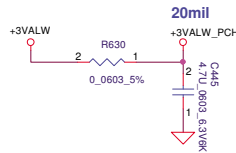
CPU support plate

Security Classification	Compal Secret Data			Compal Electronics, Inc.		
Issued Date	2011/06/24	Deciphered Date	2012/07/12	Title		
THIS SHEET OF ENGINEERING DRAWING IS THE PROPRIETARY PROPERTY OF COMPAL ELECTRONICS, INC. AND CONTAINS CONFIDENTIAL AND TRADE SECRET INFORMATION. THIS SHEET MAY NOT BE TRANSFERRED FROM THE CUSTODY OF THE COMPETENT DIVISION OF R&D DEPARTMENT EXCEPT AS AUTHORIZED BY COMPAL ELECTRONICS, INC. NEITHER THIS SHEET NOR THE INFORMATION IT CONTAINS MAY BE USED BY OR DISCLOSED TO ANY THIRD PARTY WITHOUT PRIOR WRITTEN CONSENT OF COMPAL ELECTRONICS, INC.				FAN & Screw Hole		
Size		Document Number		Rev		
Custom		Q1VZC M/B LA-8941P Schematic		1.0		
Date:		Friday, April 20, 2012		Sheet		32 of 45

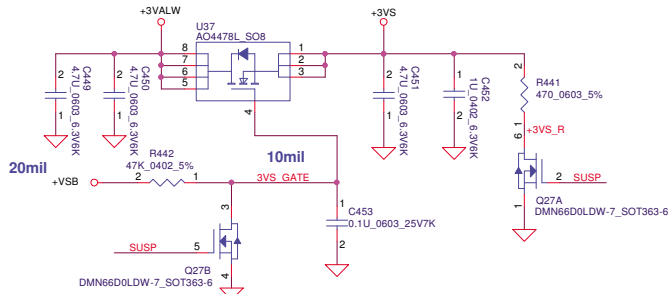
**+5VALW TO +5VS**



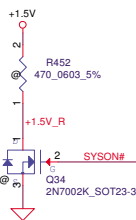
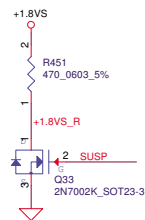
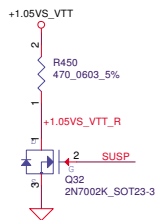
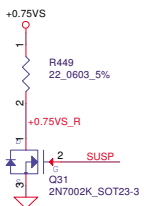
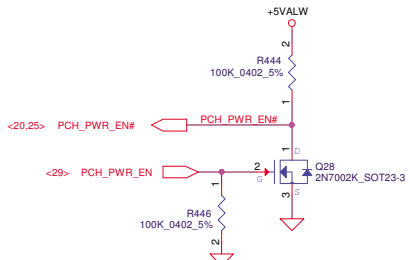
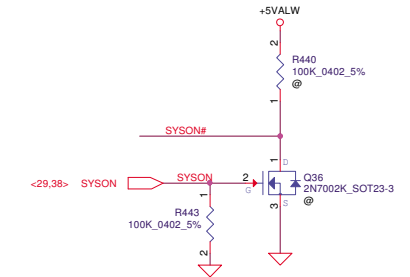
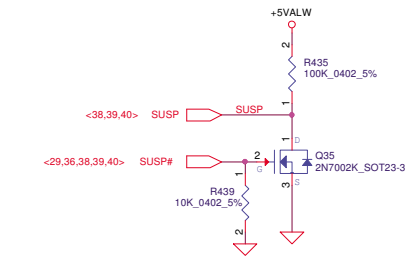
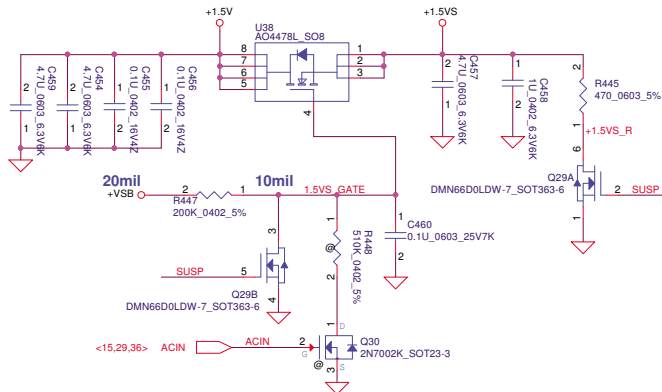
**+3VALW to +3VALW\_PCH(PCH AUX Power)**



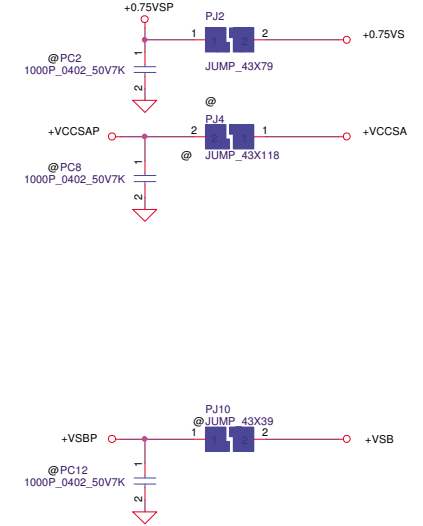
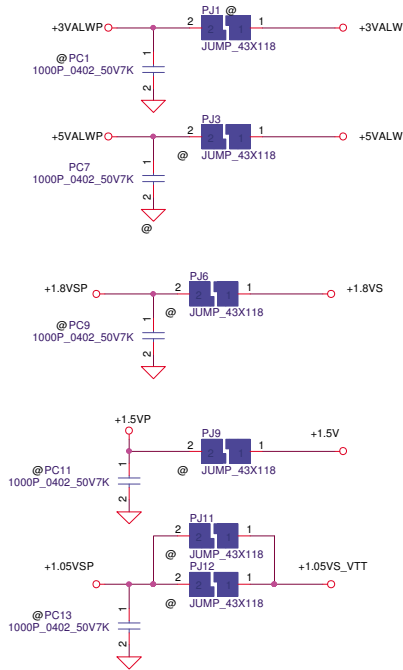
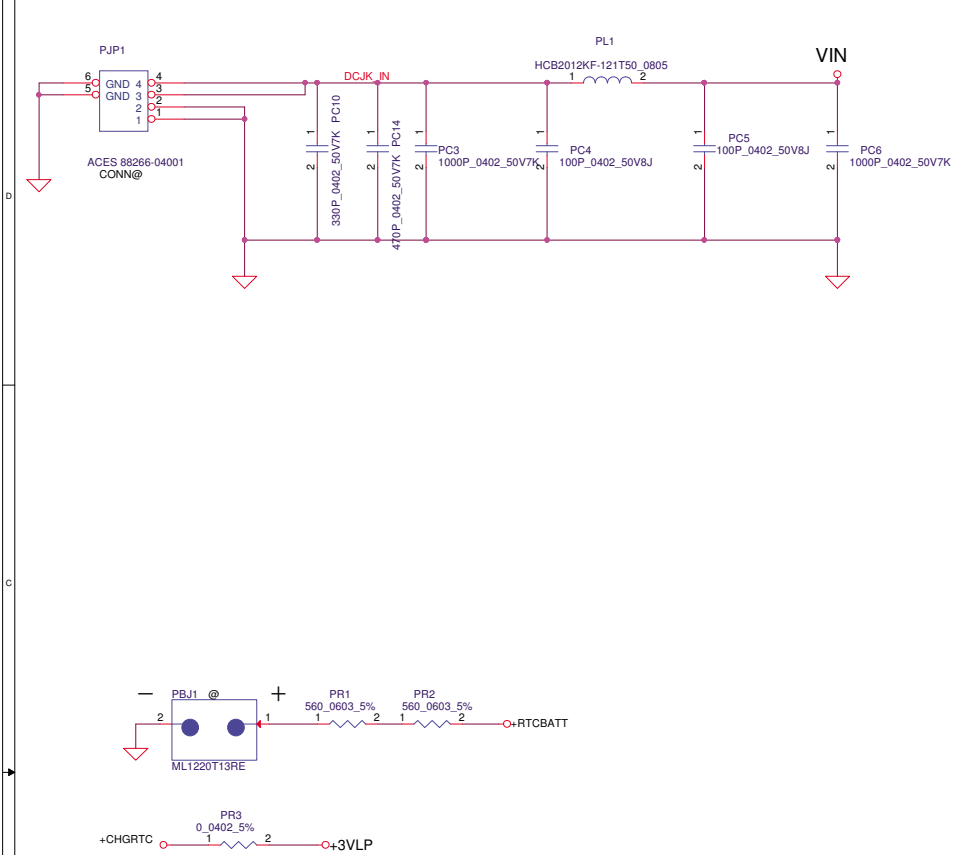
**+3VALW TO +3VS**



**+1.5V to +1.5VS**

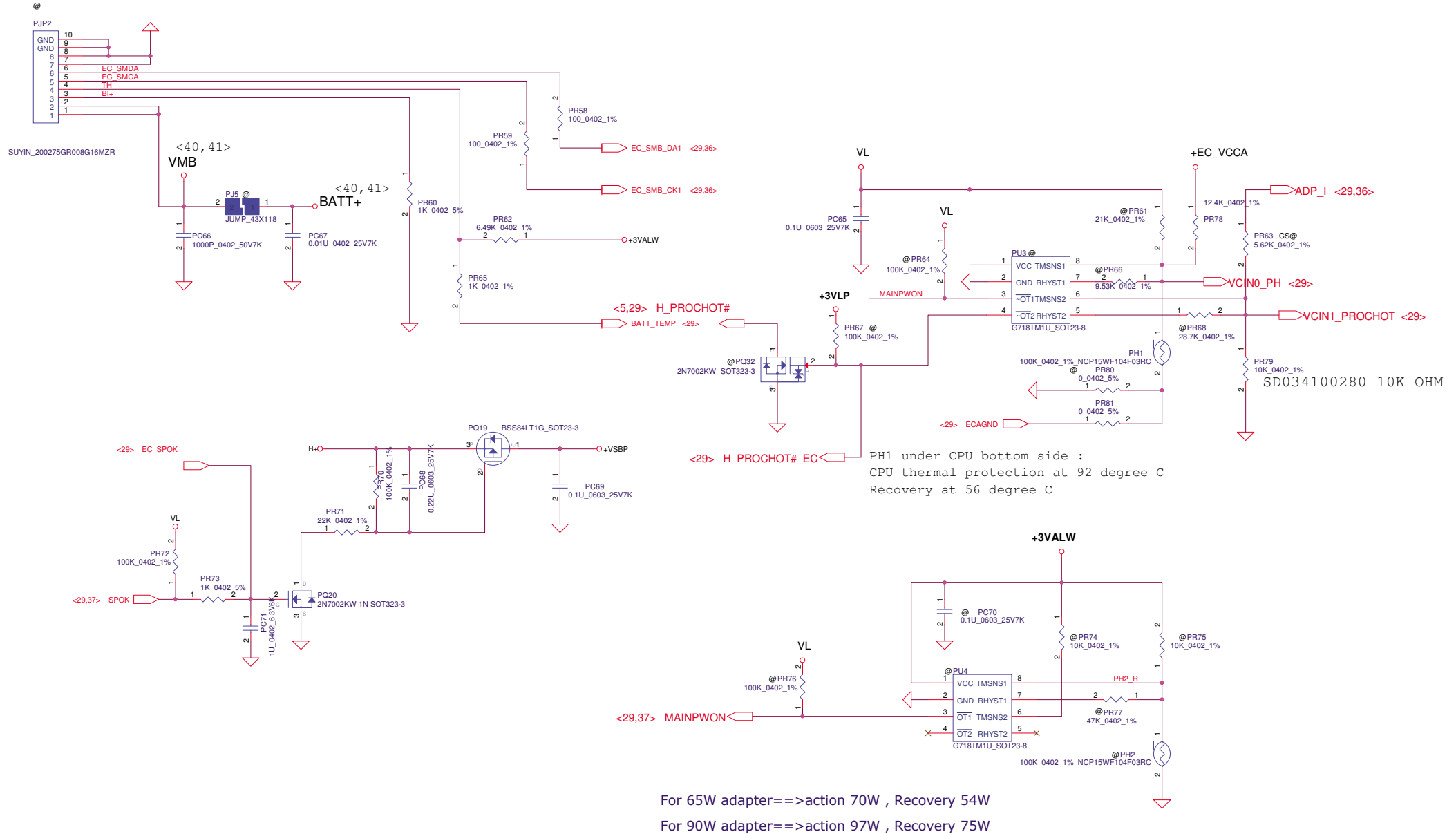


Security Classification	Compal Secret Data			Compal Electronics, Inc.		
Issued Date	2011/11/22	Deciphered Date	2012/11/22	Title		
THIS SHEET OF ENGINEERING DRAWING IS THE PROPRIETARY PROPERTY OF COMPAL ELECTRONICS, INC. AND CONTAINS CONFIDENTIAL AND TRADE SECRET INFORMATION. THIS SHEET MAY NOT BE TRANSFERRED FROM THE CUSTODY OF THE COMPETENT DIVISION OF R&D DEPARTMENT EXCEPT AS AUTHORIZED BY COMPAL ELECTRONICS, INC. NEITHER THIS SHEET NOR THE INFORMATION IT CONTAINS MAY BE USED BY OR DISCLOSED TO ANY THIRD PARTY WITHOUT PRIOR WRITTEN CONSENT OF COMPAL ELECTRONICS, INC.				Size	Document Number	Rev
				Custom	Q1VZC M/B LA-8941P Schematic	1.0
Date: Friday, April 20, 2012				Sheet	33	of 45



Security Classification		Compal Secret Data				Compal Electronics, Inc.			
Issued Date		2011/11/22		Deciphered Date		2012/11/22		Title	
THIS SHEET OF ENGINEERING DRAWING IS THE PROPRIETARY PROPERTY OF COMPAL ELECTRONICS, INC. AND CONTAINS CONFIDENTIAL AND TRADE SECRET INFORMATION. THIS SHEET MAY NOT BE TRANSFERRED FROM THE CUSTODY OF THE COMPETENT DIVISION OF R&D DEPARTMENT EXCEPT AS AUTHORIZED BY COMPAL ELECTRONICS, INC. NEITHER THIS SHEET NOR THE INFORMATION IT CONTAINS MAY BE USED BY OR DISCLOSED TO ANY THIRD PARTY WITHOUT PRIOR WRITTEN CONSENT OF COMPAL ELECTRONICS, INC.						PWR DCIN / Pre-charge			
						Size	Document Number		Rev
						Q1VZC M/B LA-8941P Schematic		1.0	
Date:		Friday, April 20, 2012		Sheet		34		of 45	

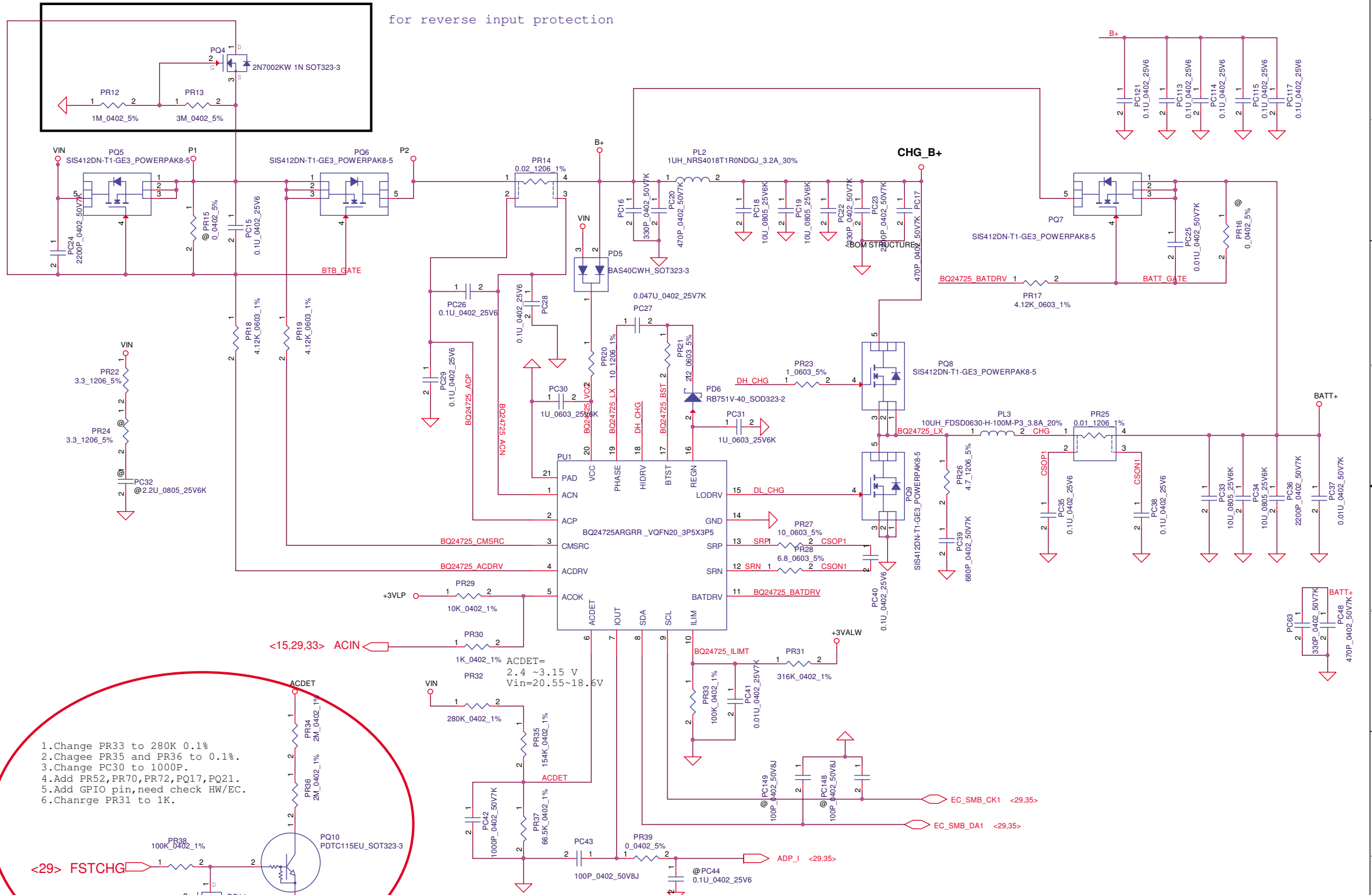
footprint :SUYIN\_200275MR008G15Q2R\_8P-T  
PN:DC040007N10 SOCKET BATT C200275MR008G15Q2R 8P W/FORK



For 65W adapter==>action 70W , Recovery 54W  
For 90W adapter==>action 97W , Recovery 75W

Security Classification		Compal Secret Data		Compal Electronics, Inc.	
Issued Date	2011/11/22	Deciphered Date	2012/11/22	Title	
THIS SHEET OF ENGINEERING DRAWING IS THE PROPRIETARY PROPERTY OF COMPAL ELECTRONICS, INC. AND CONTAINS CONFIDENTIAL AND TRADE SECRET INFORMATION. THIS SHEET MAY NOT BE TRANSFERRED FROM THE CUSTODY OF THE COMPETENT DIVISION OF R&D DEPARTMENT EXCEPT AS AUTHORIZED BY COMPAL ELECTRONICS, INC. NEITHER THIS SHEET NOR THE INFORMATION IT CONTAINS MAY BE USED BY OR DISCLOSED TO ANY THIRD PARTY WITHOUT PRIOR WRITTEN CONSENT OF COMPAL ELECTRONICS, INC.				Size	Document Number
				Custom	Q1VZC M/B LA-8941P Schematic
				Date	Friday, April 20, 2012
				Sheet	35 of 45
				Rev	1.0

for reverse input protection

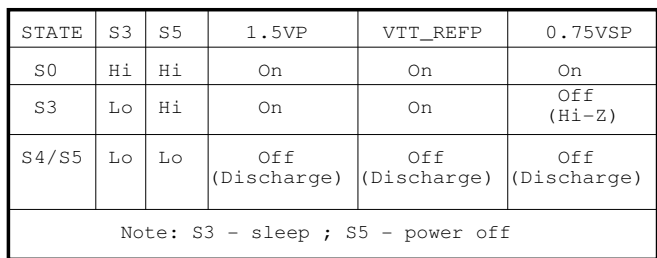


- 1.Change PR33 to 280K 0.1%
- 2.Chagee PR35 and PR36 to 0.1%.
- 3.Change PC30 to 1000P.
- 4.Add PR52,PR70,PR72,PQ17,PQ21.
- 5.Add GPIO pin,need check HW/EC.
- 6.Chanrgre PR31 to 1K.

WWW.AliSaler.Com

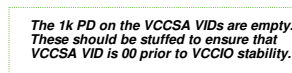
Security Classification		Compal Secret Data		Compal Electronics, Inc.	
Issued Date	2011/11/22	Deciphered Date	2012/11/22	Title	PWR DCIN / Pre-charge
THIS SHEET OF ENGINEERING DRAWING IS THE PROPRIETARY PROPERTY OF COMPAL ELECTRONICS, INC. AND CONTAINS CONFIDENTIAL AND TRADE SECRET INFORMATION. THIS SHEET MAY NOT BE TRANSFERRED FROM THE CUSTODY OF THE COMPETENT DIVISION OF R&D DEPARTMENT EXCEPT AS AUTHORIZED BY COMPAL ELECTRONICS, INC. NEITHER THIS SHEET NOR THE INFORMATION IT CONTAINS MAY BE USED BY OR DISCLOSED TO ANY THIRD PARTY WITHOUT PRIOR WRITTEN CONSENT OF COMPAL ELECTRONICS, INC.				Size	Document Number
				Custom	Q1VZC M/B LA-8941P Schematic
				Date	Friday, April 20, 2012
				Sheet	36 of 45
				Rev	1.0





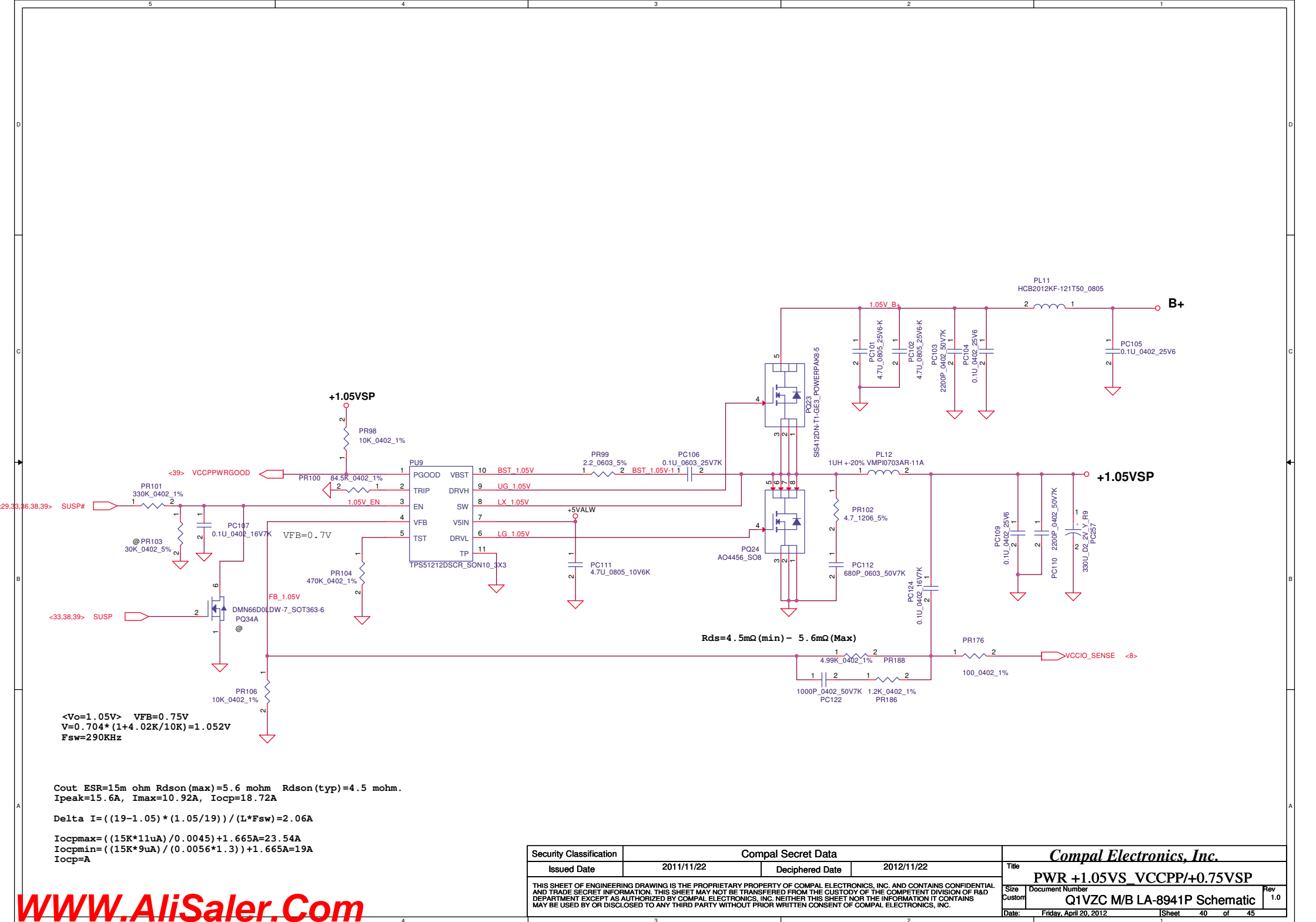
$$\begin{aligned} I_{ocpmax} &= (21.5K \cdot 11\mu A) / 0.0135 + 0.5 \text{ delta } I = A \\ I_{ocpmin} &= (21.5K \cdot 9\mu A) / (0.0165) + 0.5 \text{ delta } I = 15.6A \end{aligned}$$

Security Classification		Compal Secret Data		<i>Compal Electronics, Inc.</i> <b>PWR-+1.5VP</b>	
Issued Date	2011/11/22	Deciphered Date	2012/11/22	Title	
THIS SHEET OF ENGINEERING DRAWING IS THE PROPRIETARY PROPERTY OF COMPAL ELECTRONICS, INC. AND CONTAINS CONFIDENTIAL AND TRADE SECRET INFORMATION. THIS SHEET MAY NOT BE TRANSFERRED FROM THE CUSTODY OF THE COMPETENT DIVISION OF R&D DEPARTMENT EXCEPT AS AUTHORIZED BY COMPAL ELECTRONICS, INC. NEITHER THIS SHEET NOR THE INFORMATION IT CONTAINS MAY BE USED BY OR DISCLOSED TO ANY THIRD PARTY WITHOUT PRIOR WRITTEN CONSENT OF COMPAL ELECTRONICS, INC.				Size	Rev
				Custom	1.0
				Document Number <b>Q1VZC /MB LA-8941P Schematic</b>	
Date:	Friday, April 20, 2012	ISheet	38	of	45



VID [0]	VID[1]	VCCSA Vout (ULV only)
0	0	0.9V
0	1	0.85V
1	0	0.775V
1	1	0.75V

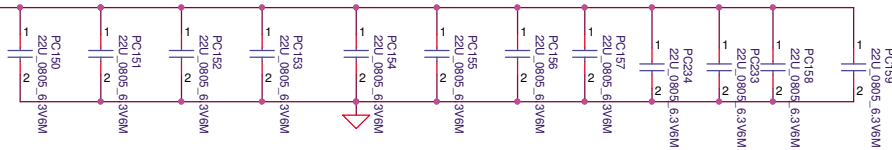
Security Classification	Compul Secret Data			<i>Compul Electronics, Inc.</i>	
Issued Date	2011/11/22	Deciphered Date	2012/11/22	Title	PWR +VCCSAP
THIS SHEET OF ENGINEERING DRAWING IS THE PROPRIETARY PROPERTY OF COMPUL ELECTRONICS, INC. AND CONTAINS CONFIDENTIAL AND TRADE SECRET INFORMATION. THIS SHEET MAY NOT BE TRANSFERRED FROM THE CUSTODY OF THE COMPETENT DIVISION OF R&D DEPARTMENT EXCEPT AS AUTHORIZED BY COMPUL ELECTRONICS, INC. NEITHER THIS SHEET NOR THE INFORMATION IT CONTAINS MAY BE USED BY OR DISCLOSED TO ANY THIRD PARTY WITHOUT PRIOR WRITTEN CONSENT OF COMPUL ELECTRONICS, INC.				Size C	Document Number
				Q1VZC M/B LA-8941P Schematic	
Date: Friday, April 20, 2012				Sheet	39 of 45



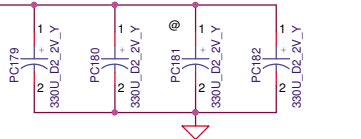


CR PDDG Rev 0.95

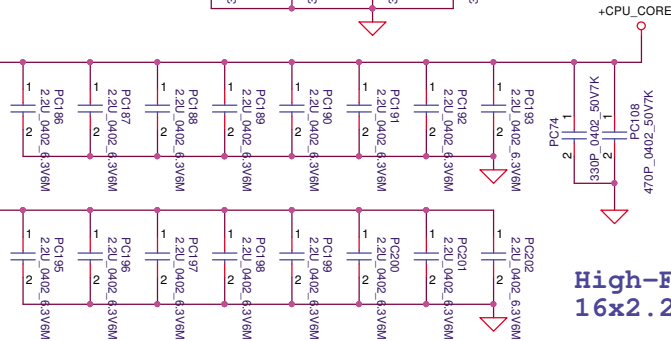
### Mid-Frequency Decoupling 12x22 $\mu$ F



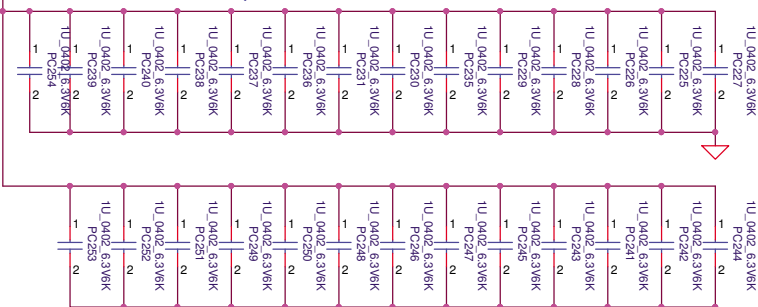
### Low-Frequency Decoupling 3x330 $\mu$ F 9m



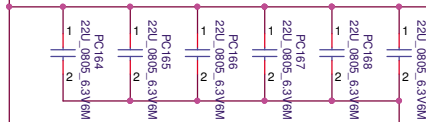
### High-Frequency Decoupling 16x2.2 $\mu$ F



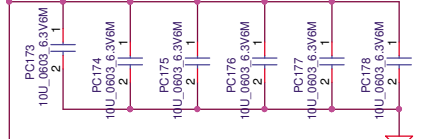
### High-Frequency Decoupling 27x1 $\mu$ F



### Mid-Frequency Decoupling 6x22 $\mu$ F



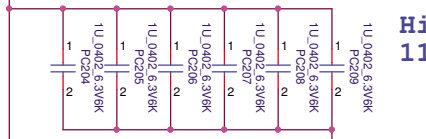
### Mid-Frequency Decoupling 6x10 $\mu$ F 0603



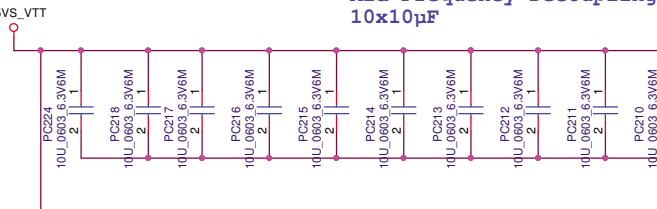
### Low-Frequency Decoupling 2x330 $\mu$ F 9m



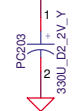
### High-Frequency Decoupling 11x1 $\mu$ F



### Mid-Frequency Decoupling 10x10 $\mu$ F



### Low-Frequency Decoupling 1x330 $\mu$ F 9m



Security Classification		Compal Secret Data		<b>Compal Electronics, Inc.</b>				
Issued Date		2011/11/22	Deciphered Date	2012/11/22		Title		
THIS SHEET OF ENGINEERING DRAWING IS THE PROPRIETARY PROPERTY OF COMPAL ELECTRONICS, INC. AND CONTAINS CONFIDENTIAL AND TRADE SECRET INFORMATION. THIS SHEET MAY NOT BE TRANSFERRED FROM THE CUSTODY OF THE COMPETENT DIVISION OF R&D DEPARTMENT EXCEPT AS AUTHORIZED BY COMPAL ELECTRONICS, INC. NEITHER THIS SHEET NOR THE INFORMATION IT CONTAINS MAY BE USED BY OR DISCLOSED TO ANY THIRD PARTY WITHOUT PRIOR WRITTEN CONSENT OF COMPAL ELECTRONICS, INC.				<b>PWR - PROCESSOR DECOUPLING</b>				
				Size	Document Number		Rev	
				Q1VZC M/B LA-8941P Schematic		1.0		
Date:		Friday, April 20, 2012		Sheet		42 of 45		

## Version change list (P.I.R. List)

Page 1 of 1  
for PWR

Item	Fixed Issue	Reason for change	Rev.	PG#	Modify List	Date	Phase
1			0.1			2010/12/29	
2			0.1	---		2010/12/29	
3						2011/02/08	
4						2011/02/08	
5						2011/02/08	
6				---		2011/02/08	
7				---		2011/02/16	
8				---		2011/05/13	PVT2
9				---		2011/05/13	PVT2
10				---		2011/05/13	PVT2
11				---		2011/05/13	PVT2
12						2011/05/13	PVT2
13							
14							
15							

Security Classification	Compal Secret Data			Compal Electronics, Inc.		
Issued Date	2011/11/22	Deciphered Date	2012/11/22	Title		
THIS SHEET OF ENGINEERING DRAWING IS THE PROPRIETARY PROPERTY OF COMPAL ELECTRONICS, INC. AND CONTAINS CONFIDENTIAL AND TRADE SECRET INFORMATION. THIS SHEET MAY NOT BE TRANSFERRED FROM THE CUSTODY OF THE COMPETENT DIVISION OF R&D DEPARTMENT EXCEPT AS AUTHORIZED BY COMPAL ELECTRONICS, INC. NEITHER THIS SHEET NOR THE INFORMATION IT CONTAINS MAY BE USED BY OR DISCLOSED TO ANY THIRD PARTY WITHOUT PRIOR WRITTEN CONSENT OF COMPAL ELECTRONICS, INC.				Q1VZC M/B LA-8941P Schematic		Rev 1.0
				Date: Friday, April 20, 2012		Sheet 43 of 45

